

## STAFF REPORT

**DATE:** October 3, 2023

**TO:** City Council

**FROM:** Dianna Jensen, Direct of Public Works - Engineering & Transportation /  
City Engineer  
Melissa Marshall, Principal Civil Engineer  
Melody Eldridge, Senior Civil Engineer

**SUBJECT:** Reject All Bids and Re-Bid Sports Field Improvements – Drinking  
Fountains Installation Project, CIP No. ET0002

---

### **Recommendation**

Approve the attached Resolution rejecting all bids for the Sports Field Improvements – Drinking Fountain Installation Project CIP No. ET0002, and authorize staff to re-bid the project at a later date in an effort to secure more favorable pricing.

### **Fiscal Impact**

Funding for this work was budgeted to come from funds allocated to the CIP ET0002 Sports Field Improvements, which was set up to construct and pay for improvements associated with the City's August 2022 Consent Agreement with the Davis Youth Softball Association. In addition to installing drinking fountains, these funds were also intended to be used to purchase bleachers and other improvements as listed in the agreement. Funding sources for the construction of this project are a combination of funds from Park Impact Fees (483; \$200,000) and the Park Facility Replacement Fund (626; \$200,000).

The funds for the Add Alternate 1 (Two Water Quality Sampling Stations) construction contract and a corresponding fair percentage of staff time, contingencies, and trench cut fees were to be paid out of the unallocated Water Capital Fund (512).

As discussed in the “Background and Analysis” Section of this Staff Report, the current bids for the drinking fountain installation exceed the allotted project budget.

### **Council Goal(s)**

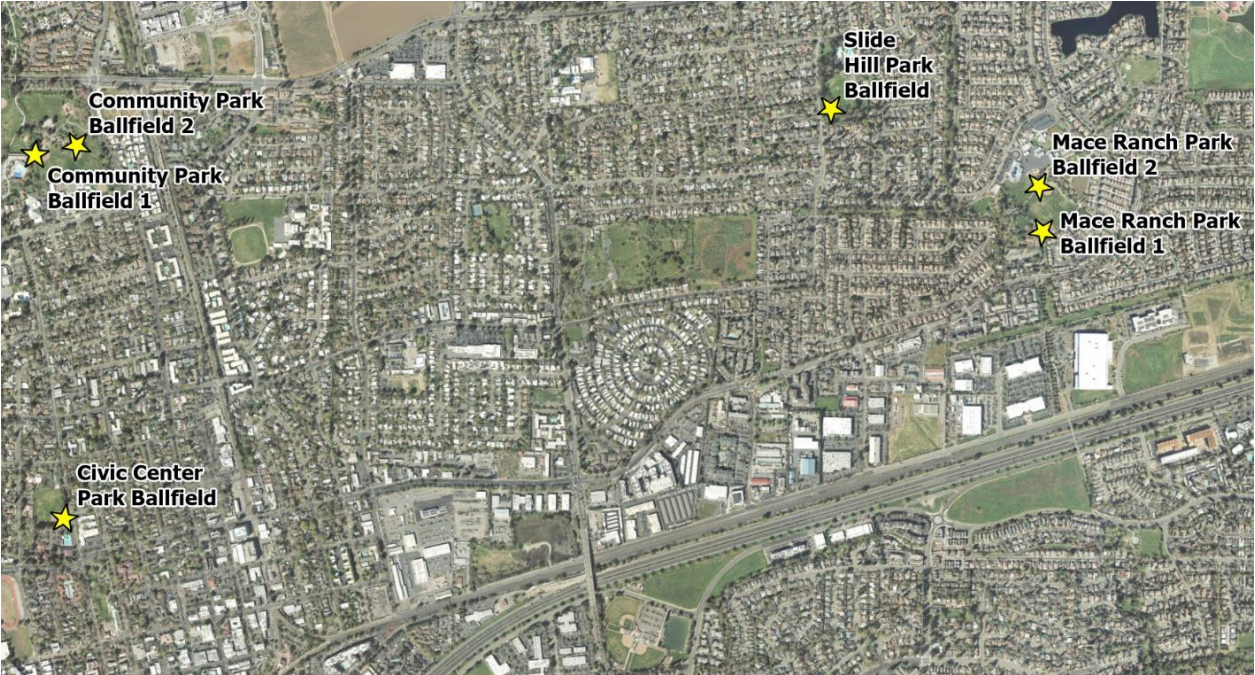
This project is consistent with the following City Council Goal to Ensure a Safe, Healthy, Equitable Community and Fund, Maintain and Improve the Infrastructure.

### **Commission Input**

On May 18, 2022 the Recreation & Park Commission received information on the project as part of the City's overall strategy to help ensure compliance with Assembly Bill 2404 – Fair Play in Community Sports Act.

**Background and Analysis**

In August 2022, the City of Davis entered into an agreement with the Davis Youth Softball Association (DYSA) to help ensure that the City was complying with Assembly Bill 2404 (“Fair Play in Community Sports Act”) which requires gender equity in youth programs. As part of the agreement, the City is required to install drinking fountains, bleachers/seating, and other amenities at softball fields in local parks. This project is to install six drinking fountains adjacent to softball fields within four City parks: Civic Center Park, Community Park, Slide Hill Park, and Mace Ranch Park in order to make drinking water more equitably accessible to youth athletes. The six drinking fountain locations are shown on the map below.



This project would install fountains with bottle fillers, water lines, disposal/sewer lines, and associated improvements (e.g., valves and concrete pads). Given the locations of the softball fields relative to existing drinking water sources, installing the six fountains requires installing a combined 1,200 feet of new potable drinking water line, three new water meters, four new water backflow prevention devices, 150 feet of sewer line, and pavement repair within one public street (Tulip Lane). Detailed exhibits for the work at each location are provided in Attachment 2.

During design, it was determined that it would be beneficial to the City’s water system to install two new quality water sampling stations at adjacent locations while the drinking fountain work was underway. These sampling stations, located at Civic Center Park and Slide Hill Park, were added to the bid documents as “Add Alternate 1” to be paid for out of the unallocated Water Capital Fund. Sampling stations are located periodically throughout the City’s water system to help the City determine localized water quality. Constructing the new water quality sampling stations in these locations as part of this project helps ensure a robust water system while also reducing the mobilization costs that

would otherwise be incurred if the sampling stations were constructed as a stand-alone project.

On August 29, 2023, at 2:00 PM, bids were publicly opened by City Staff with the results in Table 2 below.

	<b>Company</b>	<b>Drinking Fountains Bid (Not Including Add Alt 1)</b>	<b>Total Bid (Including Add Alt 1)</b>
1	McNabb Construction,	\$326,564	\$361,598
2	Pro Builders	\$505,050	\$541,550
	Engineer’s Estimate	<b>\$270,000</b>	<b>\$300,000</b>

Construction costs continue to remain higher than anticipated as material costs fluctuate. One primary reason for the difference between the bids and the Engineer’s estimate for this project was the cost of the copper pipes and backflow assemblies, which were higher than for other projects bid within the last two years.

With a currently-available budget of \$400,000 for all consent agreement items (including an estimated \$30,000 future cost for bleachers), and factoring in additional “soft costs” estimated to be a combined 25% of the bid price (including estimated construction contingency, construction inspection, materials testing, municipal arts fund, and staff design and support costs), the lowest bid for the drinking fountain installation does not allow for the project to remain within the total allotted budget.

Due to the bids being over the available construction budget amount for the drinking fountains portion of the project, staff recommends rejecting all bids and formally re-bidding the project either in winter or early spring to receive more competitive bidding. Staff believes re-bidding the project in this time frame will produce more competitive bids, as it will not be the busy summer season, when most contractors have already secured construction projects.

**Attachments**

- 1. Resolution
- 2. Bid Exhibits for the Drinking Fountains Project

**RESOLUTION NO. 23-XXX, SERIES 2023**

**RESOLUTION REJECTING ALL BIDS FOR THE SPORTS FIELD IMPROVEMENTS – DRINKING FOUNTAIN INSTALLATION PROJECT, CIP NO. ET0002, AND AUTHORIZING CITY STAFF TO RE-BID THE PROJECT AT A LATER DATE**

WHEREAS, the City of Davis did prepare exhibits, specifications and estimate, and the City of Davis did call for bids on August 7th for Sports Field Improvements – Drinking Fountain Installation Project, CIP No. ET0002; and

WHEREAS, City Staff did publicly open and read said bids at 2 p.m., on Tuesday, August 29, 2023; and

WHEREAS, it has been determined that the low bid was over the available construction budget for the project.

NOW, THEREFORE, BE IT RESOLVED that the City Council of the City of Davis does hereby reject all bids for the Sports Field Improvements – Drinking Fountain Installation Project, CIP No. ET0002; and

BE IT FURTHER RESOLVED that the City Council of the City of Davis does hereby authorize City Staff to re-bid the Sports Field Improvements – Drinking Fountain Installation Project, CIP No. ET0002.

PASSED AND ADOPTED by the City Council for the City of Davis on this 3rd day of October, 2023, by the following vote:

AYES:

NOES:

Will Arnold  
Mayor

ATTEST:

Zoe S. Mirabile, CMC  
City Clerk

**NOTES:**

- All work shall be performed in accordance with the project special conditions which are a part of this plan set by reference. All work shall also be performed in accordance with the City of Davis Public Works Standard Specifications and Parks Department Standard Specifications most recent edition, including any Addenda.  
Standard Plans are available online at <https://www.cityofdavis.org/city-hall/public-works-engineering-and-transportation/engineering/city-standards>.
- Basis of elevations: Use rim elevation or existing maintenance holes at each intersection.
- The Contractor shall notify the City of Davis at phone (530)747-5846 at least 2 working days prior to commencing construction work and prior to resuming work on site after an extended shut down (longer than one week in duration).
- The City of Davis is a member of the Underground Services Alert (U.S.A.) One call program. All Contractors on this project shall notify U.S.A. 48 Hours (2 working days) in advance of performing any excavation work. The toll free phone number is 811.
- The following list of Standard Plans, contained in the Public Works Standard Specifications, apply to this project:  
- See Attached Detail Sheets D1 through D4.
- Appropriate tree protection, multi-use path traffic control/ safety measures, and stormwater protection measures will be implemented at each project location, as applicable.
- Areas surrounding each project location to be returned to pre-project conditions, with sod and landscaping replaced/ repaired as needed, unless otherwise specified.
- All existing and proposed utility and fountain locations are APPROXIMATE, to be verified in field and/or confirmed with the City's Representative during construction.

# PROJECT CIP NO. ET0002 SPORTS FIELDS IMPROVEMENTS - DRINKING FOUNTAIN INSTALLATION

## EXHIBITS



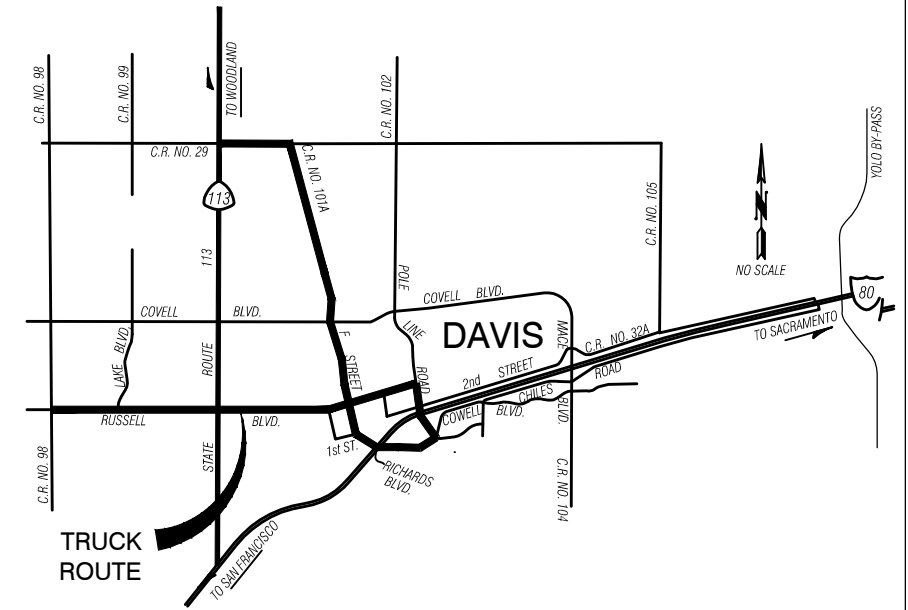
**PROJECT LOCATIONS**

NO SCALE

**LEGEND**

New Features	Existing Features
● Backflow	— Water Main
○ Meter	— Hydrant Lateral
● Cleanout	⊗ Maintenance Hole
● Fountains	→ Sewer - Gravity Line
— Water,	⊠ Curb or Drop Inlet
— Sewer, 4"	⊗ Maintenance Hole
— Concrete	— Storm Mains
— Dispersal Field	— Conduit
⊕ Shut off Valve	— Contours 1ft
○ Sampling Station	□ Parcels
□ Tree Protection	

Project Description: Installation of 6 model 440 SMSS drinking fountains with bottle fillers (4 new locations; 2 replacements) and associated water, drainage/sewer, and site improvements. Drinking fountains to be located within 4 City Parks.



**VICINITY MAP**

NO SCALE

**SHEET INDEX**

1	Cover Sheet
2	Civic Center Park Ballfield Fountain Location
3	Community Park Ballfield 1 Fountain Location
4	Community Park Ballfield 2 Fountain Location
5	Slide Hill Park Ballfield Fountain Location
6	Mace Ranch Park 1 Ballfield Fountain Location
7	Mace Ranch Park 2 Ballfield Fountain Location
D1	Details - Fountain & Paving
D2	Details - Sewer & Trench
D3	Details - Water
D4	Details - Water & Dispersal Trench

**PROJECT APPROVALS**

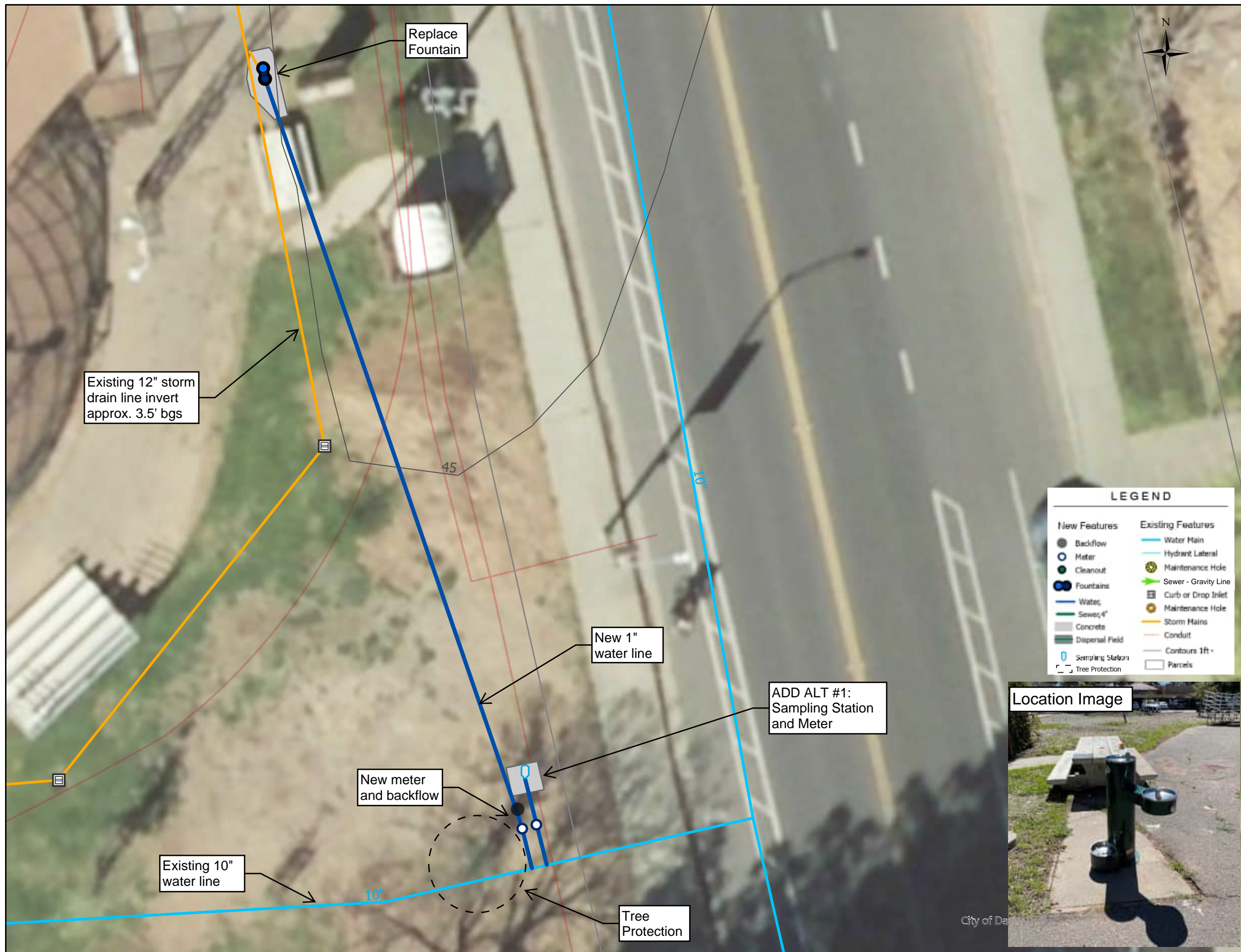
TITLE / NAME	SIGNATURE	DATE
CITY ENGINEER Dianna R. Jensen	<i>Dianna R. Jensen</i>	8/7/23

**COVER SHEET**  
C.I.P. No. ET0002



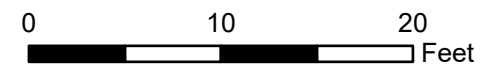
**CITY OF DAVIS**  
PUBLIC WORKS ENGINEERING  
AND TRANSPORTATION DEPT

DESIGNED BY:	DATE:
CHECKED BY:	DATE:
DRAWN BY:	DATE:
SHEET 1 OF 10 SHEETS	DWG. NO. 040-5 EXHIBITS



**NOTES:**

1. New Service Lines approximate. Exact locations to be confirmed in field.
2. 1" water service line to be installed (approximately 86') with 1" meter and 1" backflow per City Standards. New line to be copper type K before backflow and PVC schedule 40 after. PVC line to have tracer wire and marking tape to indicate potable water.
3. Protect existing fountain drainage line in place.
4. Install new drinking fountain (Model 440SM with bottle filler) in same location as existing. Demo existing pad and return existing fountain to Parks Department Representative. Connect to new water service and existing drainage.
5. Bacteria sampling at fountain required prior to acceptance. Disinfect at connection.
6. Backflow testing required prior to acceptance.
7. Re-pour concrete pad to match existing asphalt grade with max 2% slope in any direction.
8. Repair hardscape, turf, and irrigation as needed.
9. ADD ALT Item #1: Install Sampling Station after meter on separate connection to water main. Min. 18" spacing between water service taps. Exact locations to be confirmed in field. Disinfection and bacteria sampling required prior to acceptance.

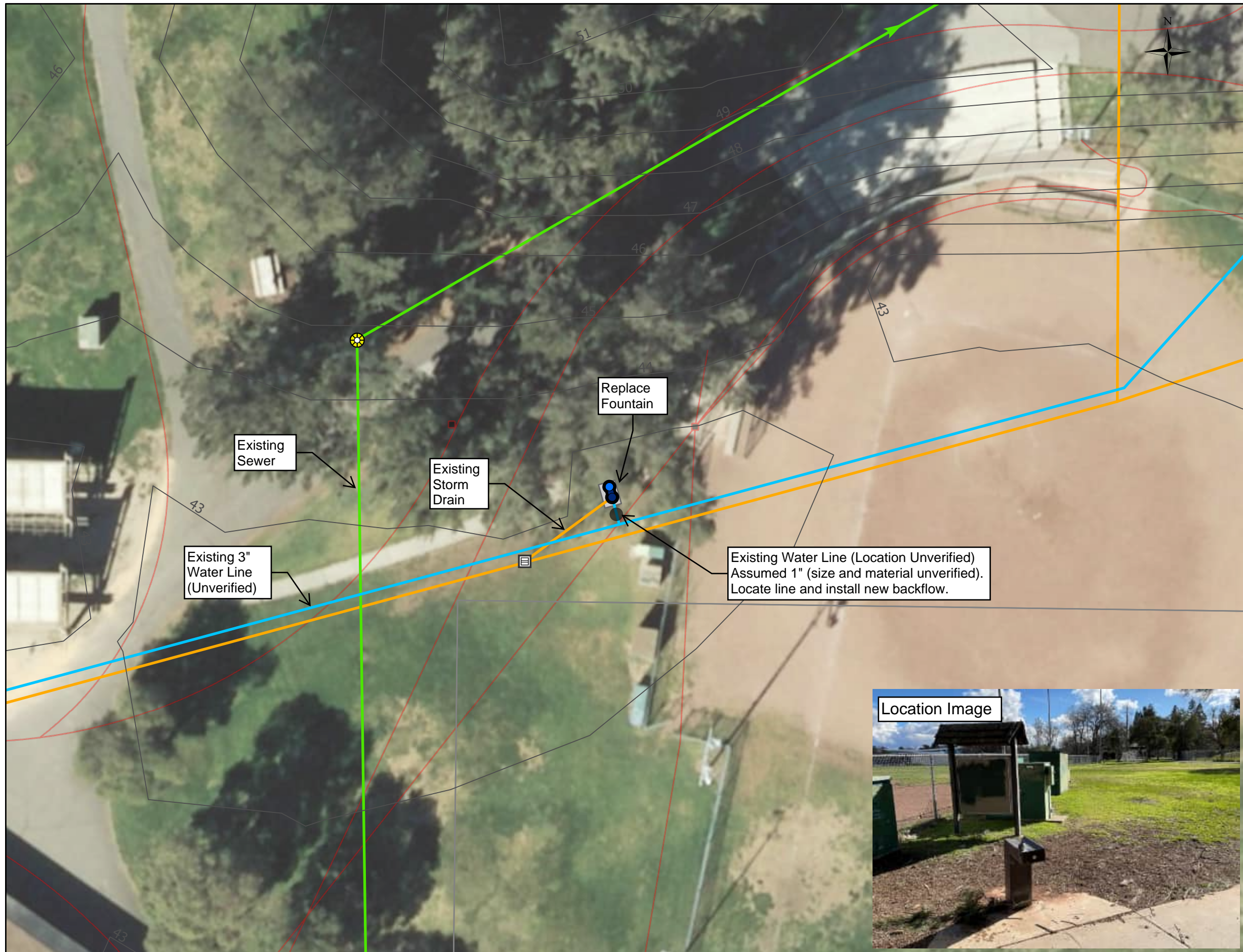


REV.	DATE	DESCRIPTION	BY
10-03-23		City Council Meeting	

Civic Center Park Ballfield Fountain Location  
CIP No. ET0002

**CITY OF DAVIS**  
PUBLIC WORKS ENGINEERING  
AND TRANSPORTATION DEPT

DESIGNED BY:	DATE:
CHECKED BY:	DATE:
DRAWN BY:	DATE:
SHEET 2 OF 11 SHEETS	
EXHIBIT 03C - 6	



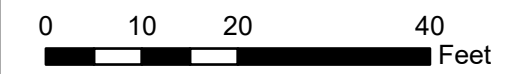
**NOTES:**

1. Install new drinking fountain (Model 440SM with bottle filler) in same location as existing. Demo existing pad. Remove and return existing fountain to Parks Department Representative.
2. Pothole and locate existing water line and add backflow approximately 2' from fountain, at direction of Public Works Representative. Replace line from backflow to new fountain.
3. Protect existing fountain drainage line in place.
4. Bacteria sampling at fountain required prior to acceptance. Disinfect prior to connection.
5. Backflow testing required prior to acceptance.
6. Pour new concrete pad to match existing pathway with max 2% slope in any direction. See details for dimensions.
7. Repair hardscape, turf, and irrigation as needed.



**LEGEND**

New Features	Existing Features
● Backflow	— Water Main
○ Meter	— Hydrant Lateral
● Cleanout	● Maintenance Hole
● Fountains	— Sewer - Gravity Line
— Water, 4"	■ Curb or Drop Inlet
— Sewer, 4"	● Maintenance Hole
■ Concrete	— Storm Mains
■ Dispersal Field	— Conduit
	— Contours 1ft
	□ Parcels

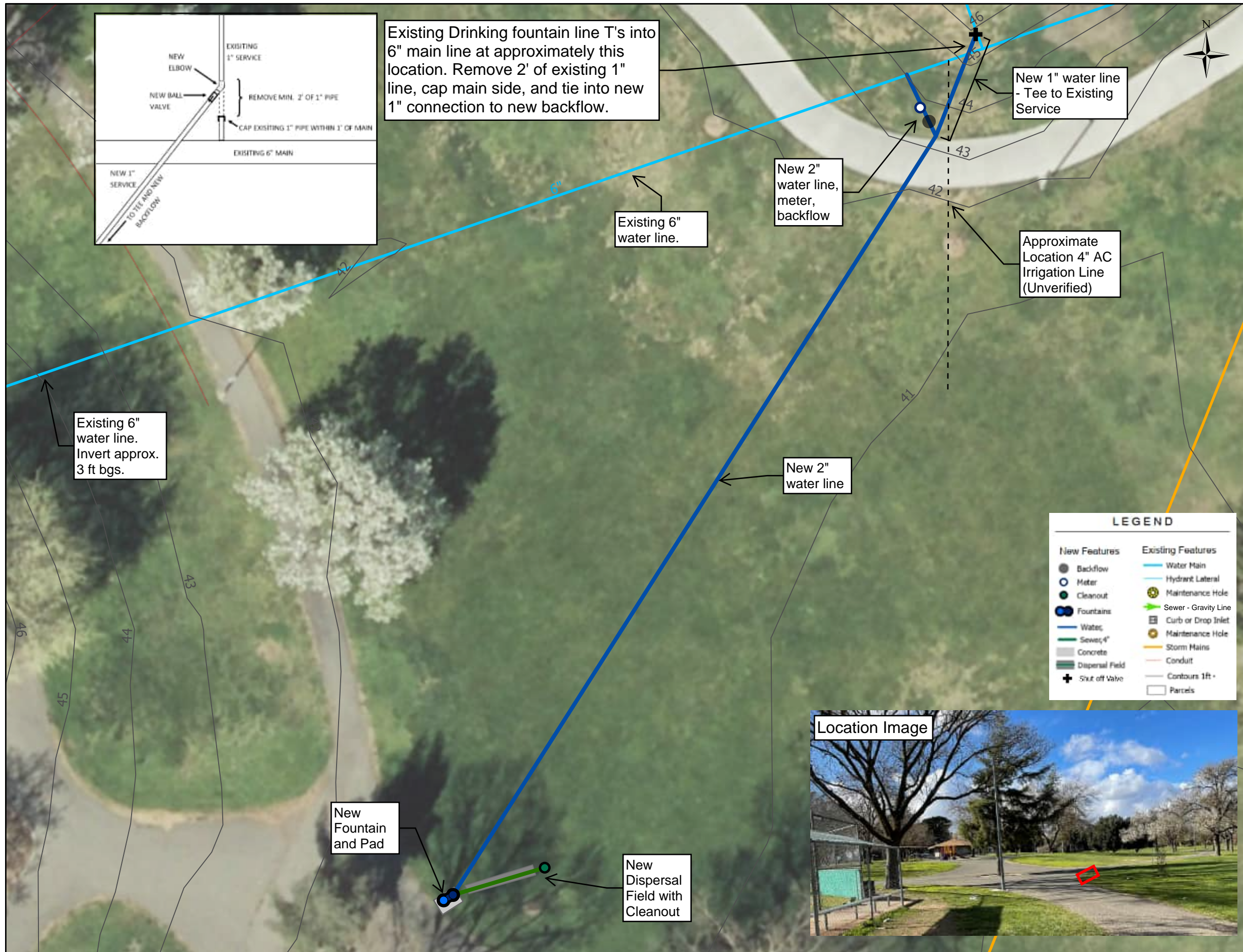


REV.	DATE	DESCRIPTION	BY
10-03-23		City Council Meeting	

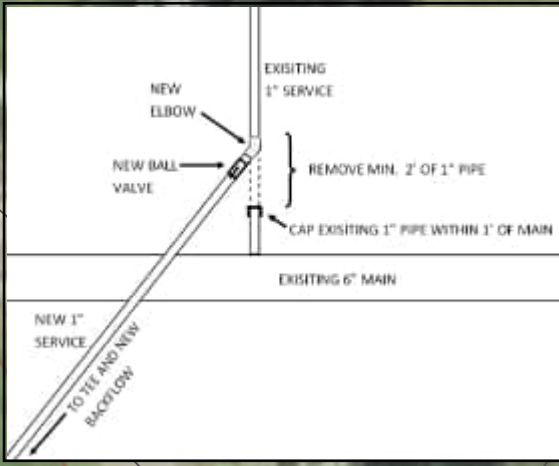
Community Park Ballfield #1 Fountain Location  
CIP No. ET0002

**CITY OF DAVIS**  
PUBLIC WORKS ENGINEERING  
AND TRANSPORTATION DEPT

DESIGNED BY:	DATE:
CHECKED BY:	DATE:
DRAWN BY:	DATE:
SHEET 3 OF 11 SHEETS	DWG. NO. EXHIBIT 030 - 7

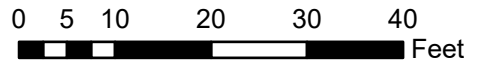


Existing Drinking fountain line T's into 6" main line at approximately this location. Remove 2' of existing 1" line, cap main side, and tie into new 1" connection to new backflow.



**NOTES:**

1. New Service Lines and fountain location approximate. Exact locations to be confirmed in field.
2. 2" water service line to be installed (approximately 200') with 1" meter and 2" backflow per City Standards. New line to be copper type K before backflow and PVC schedule 40 after. PVC line to have tracer wire and marking tape to indicate potable water.
3. After backflow line will T to a new 1" line (approx. 20' long) that will connect to an existing fountain service line with a ball valve.
4. Install new drinking fountain (Model 440SM with bottle filler).
5. Pour new concrete pad to match existing pathway with max 2% slope in any direction. See details for dimensions.
6. Bacteria sampling at fountain required prior to acceptance. Disinfect at connection.
7. Backflow testing required prior to acceptance.
8. Install drywell-style drainage per Detail D4-8. Dispersal field to be min. 14' long by 2' wide. Exact location to be confirmed in field.
9. Work Adjacent to mixed-use pathways will require a traffic control plan.
10. Repair hardscape, turf, and irrigation as needed.



LEGEND	
<b>New Features</b>	<b>Existing Features</b>
● Backflow	— Water Main
○ Meter	— Hydrant Lateral
● Cleanout	● Maintenance Hole
● Fountains	— Sewer - Gravity Line
— Water	■ Curb or Drop Inlet
— Sewer 4"	● Maintenance Hole
— Concrete	— Storm Mains
■ Dispersal Field	— Conduit
⊕ Shut off Valve	— Contours 1ft +
	□ Parcels



REV.	DATE	DESCRIPTION	BY

Community Park Ballfield 2 Fountain Location  
CIP No. ET0002



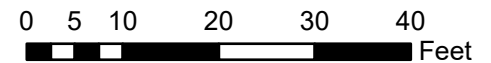
CITY OF DAVIS  
PUBLIC WORKS ENGINEERING  
AND TRANSPORTATION DEPT

DESIGNED BY:	DATE:
CHECKED BY:	DATE:
DRAWN BY:	DATE:
SHEET 4 OF 11 SHEETS	
EXHIBIT 03C - 8	





- NOTES:**
1. New Service Lines and fountain location approximate. Exact locations to be confirmed in field.
  2. 1" water service line to be installed (approximately 145') with 1" meter and 1" backflow per City Standards. New line to be copper type K before backflow and PVC schedule 40 after. PVC line to have tracer wire and marking tape to indicate potable water.
  3. Install new drinking fountain (Model 440SM with bottle filler).
  4. Install new 4" SDR-26 sewer line connection to existing sewer line (Approx. 140 ft) per City Standards. Add cleanout at property line / back of sidewalk and 3' behind fountain. Min. slope 2%. Install tracer wire and marking tape per City Stds.
  5. Pour new concrete pad with max 2% slope in any direction. See details for dimensions.
  6. Bacteria sampling at fountain required prior to acceptance. Disinfect at connection.
  7. Backflow testing required prior to acceptance.
  8. Traffic Control Plan will be required.
  9. City Staff will conduct tap on sewer in public right of way.
  10. Repair hardscape, turf, and irrigation as needed. Patch roadway per City Std. details.



REV.	DATE	DESCRIPTION	BY
10-03-23		City Council Meeting	

Slide Hill Park Ballfield Fountain Location  
CIP No. ET0002

**Davis**  
CALIFORNIA

**CITY OF DAVIS**  
PUBLIC WORKS ENGINEERING  
AND TRANSPORTATION DEPT

DESIGNED BY:	DATE:
CHECKED BY:	DATE:
DRAWN BY:	DATE:
SHEET 5 OF 11 SHEETS	DWG. NO. EXHIBIT 03C - 9

Connects to T and Mace Ranch North Ballfield Fountain. See Sheet 7.

New 2" water line



LEGEND	
<b>New Features</b>	<b>Existing Features</b>
● Backflow	— Water Main
○ Meter	— Hydrant Lateral
● Cleanout	● Maintenance Hole
● Fountains	■ Curb or Drop Inlet
— Water, 2"	● Maintenance Hole
— Sewer, 4"	— Storm Mains
— Concrete	— Conduit
■ Dispersal Field	— Contours 1ft +
□ Tree Protection	□ Parcels

**NOTES:**

1. New Service Lines and fountain location approximate. Exact locations to be confirmed in field.
2. New 2" PVC water line connects to T shown on Sheet 7 (approx. 336'). New line to be PVC schedule 40. PVC line to have tracer wire and marking tape to indicate potable water.
3. Install new drinking fountain (Model 440SM with bottle filler).
4. Install new 4" SDR-26 sewer line connection (approx. 12') to existing sewer manhole with inside drop connection per detail. Min. slope 2%. Install cleanout after fountain. Install tracer wire and marking tape per City Stds.
5. Pour new concrete pad to match existing pathway with max 2% slope in any direction. See details for dimensions.
6. Bacteria sampling at fountain required prior to acceptance. Disinfect at connection.
7. Backflow testing required prior to acceptance.
8. Repair hardscape, turf, and irrigation as needed. Patch roadway per City Std. details.
9. Install tree protection as necessary per City Guidelines. Notify Forestry group in advance of excavations within tree driplines.

Location Image



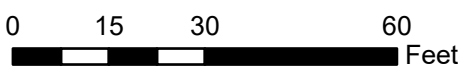
Tree Protection (Typ.)

Existing 6" Sanitary Sewer Lateral, Invert Approx. 5.85' bgs

New fountain and pad

New 4" sewer line

Existing Sewer Manhole, approx. depth 5.88'. Connect new lateral to MH via inside drop per detail

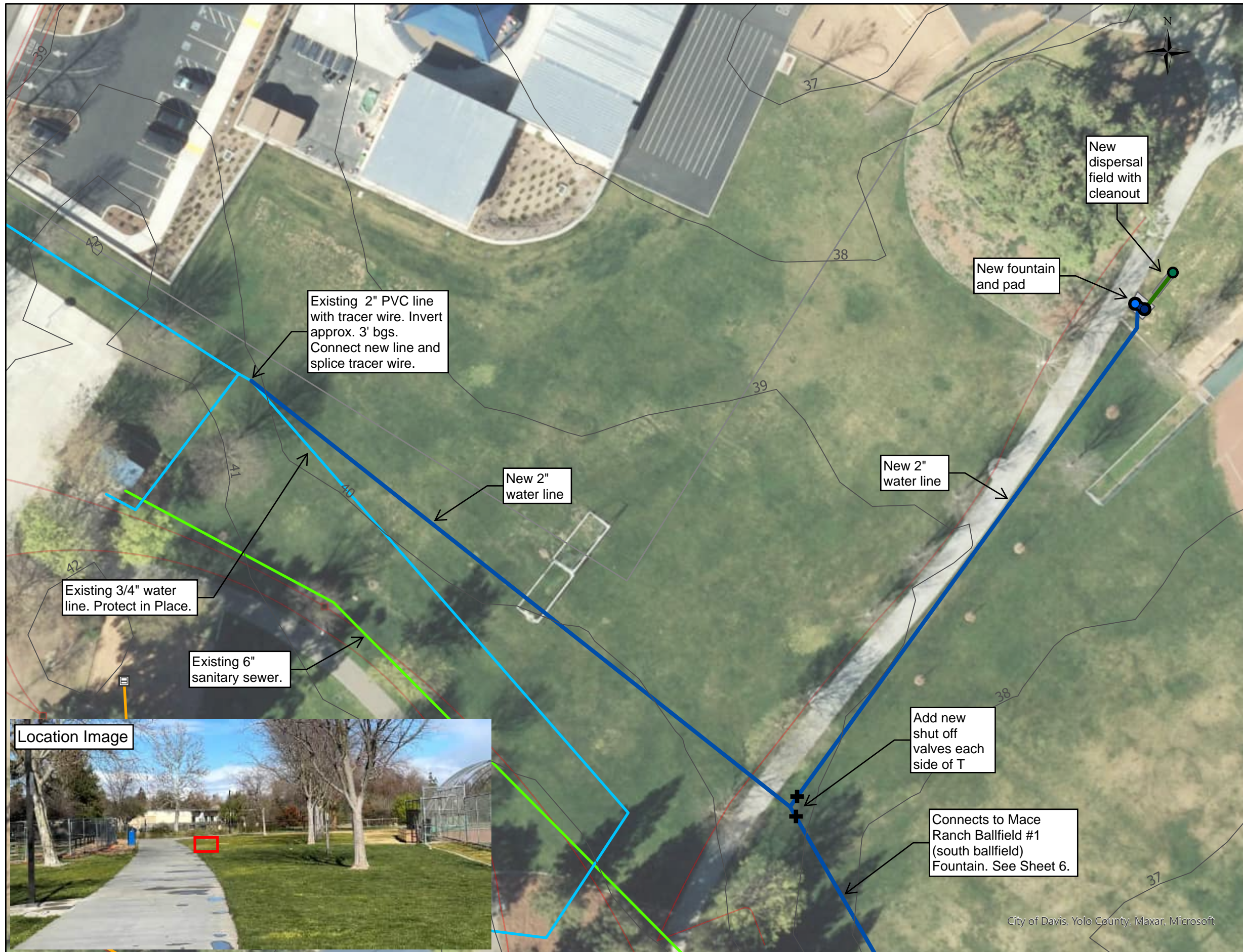


Mace Ranch Park Ballfield #1 Fountain Location  
CIP No. ET0002



CITY OF DAVIS  
PUBLIC WORKS ENGINEERING  
AND TRANSPORTATION DEPT

DESIGNED BY:	DATE:
CHECKED BY:	DATE:
DRAWN BY:	DATE:
SHEET 6 OF 11 SHEETS	
EXHIBIT 10	



- NOTES:**
1. New Service Lines and fountain location approximate. Exact locations to be confirmed in field.
  2. New 2" water line extends from existing 2" copper restroom service to new T (approx. 283'), and then extends approx. 254' to North Ballfield fountain location. All new water lines to be PVC schedule 40. PVC line to have tracer wire and marking tape to indicate potable water.
  3. Install new drinking fountain (Model 440SM with bottle filler).
  4. Install drywell-style drainage per Detail D4-8. Dispersal field to be min. 6' long by 2' wide. Exact Location to be confirmed in field.
  5. Pour new concrete pad to match existing pathway with max 2% slope in any direction. See details for dimensions.
  6. Bacteria sampling at fountain required prior to acceptance. Disinfect at connection.
  7. Repair hardscape, turf, and irrigation as needed.

**LEGEND**

New Features	Existing Features
● Backflow	— Water Main
○ Meter	— Hydrant Lateral
● Cleanout	● Maintenance Hole
● Fountains	— Sewer - Gravity Line
— Water	■ Curb or Drop Inlet
— Sewer, 4"	● Maintenance Hole
— Concrete	— Storm Mains
— Dispersal Field	— Conduit
✚ Shut off Valve	— Contours 1ft
	□ Parcels

0 10 20 40 60 80 Feet



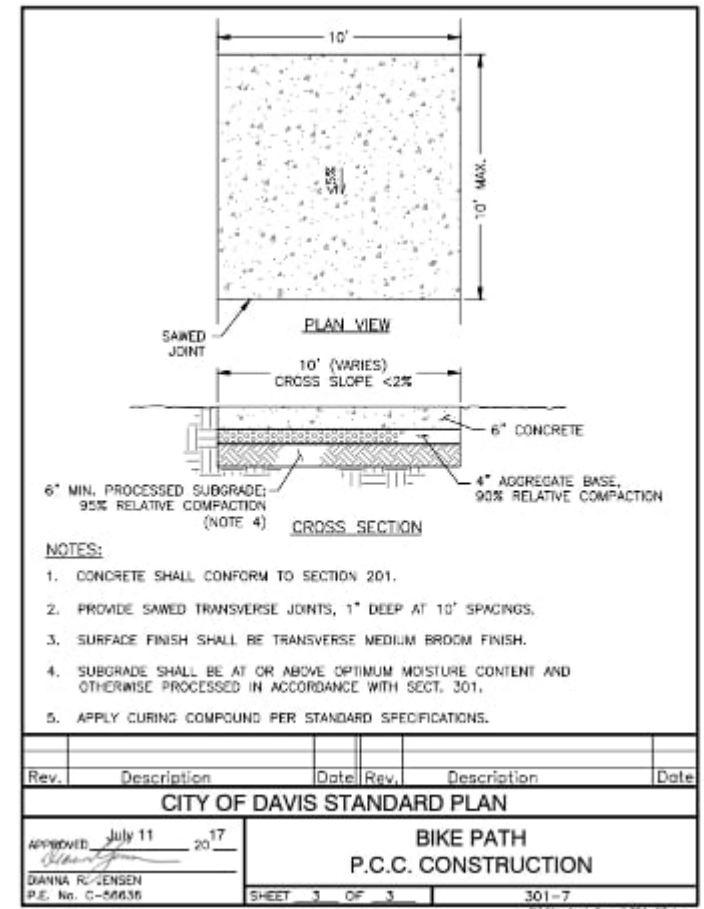
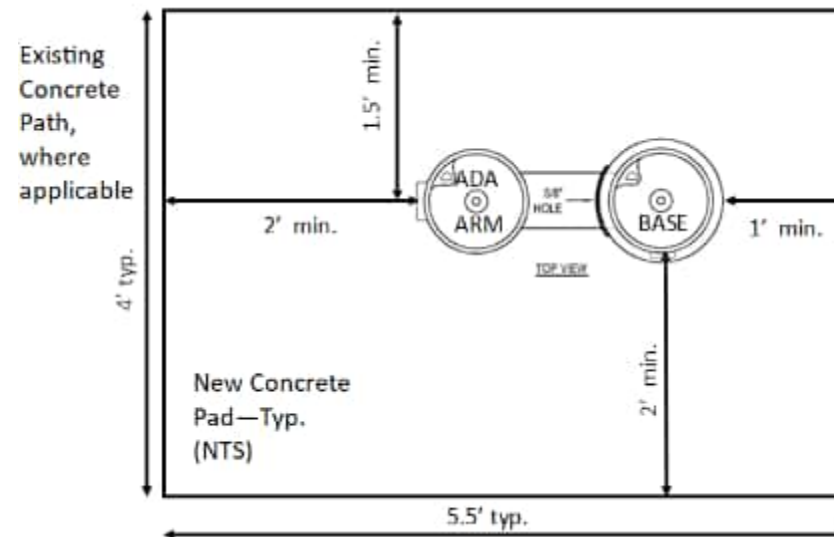
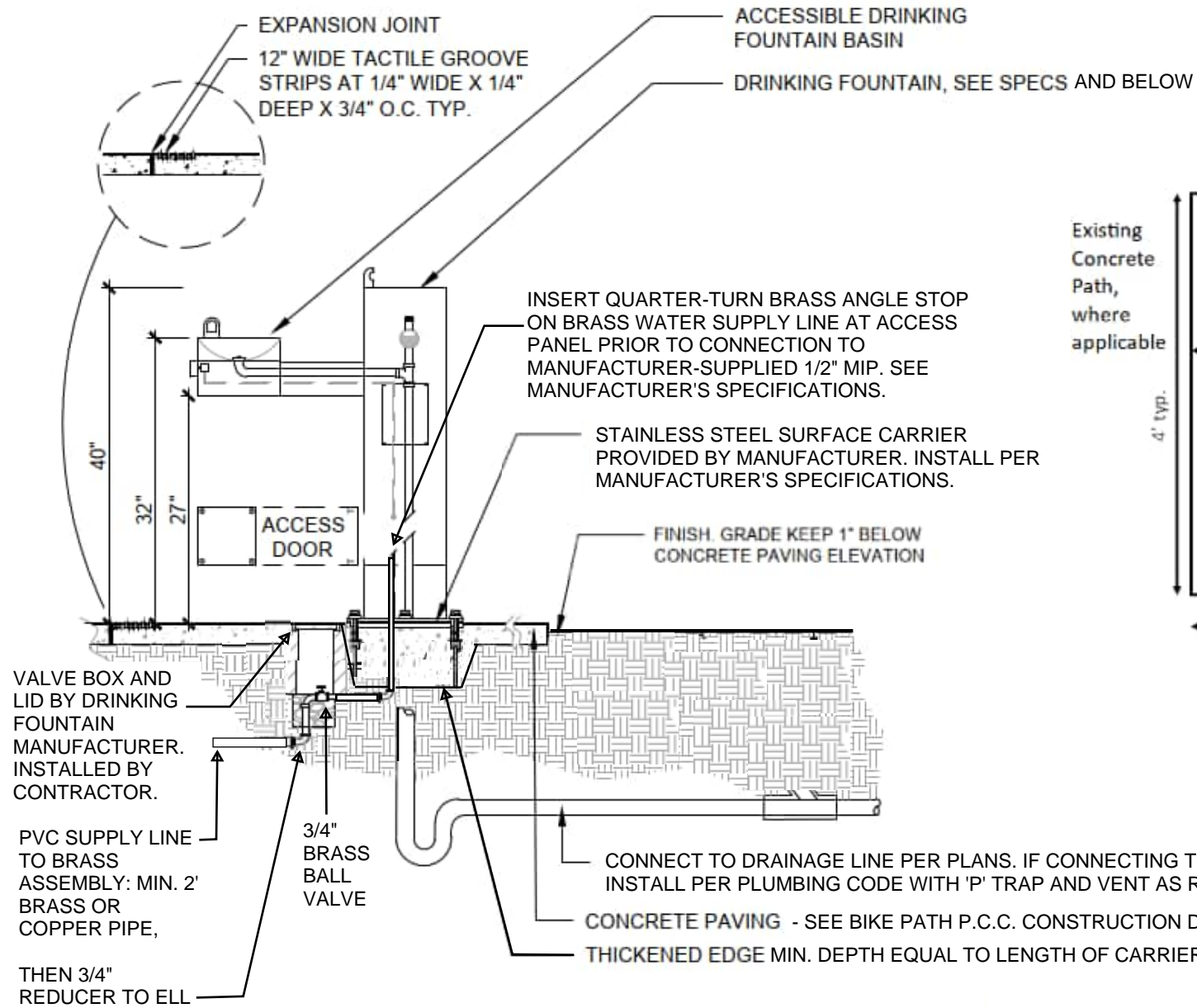
REV.	DATE	DESCRIPTION	BY
10-03-23		City Council Meeting	

Mace Ranch Park Ballfield #2 Fountain Location  
CIP No. ET0002

**Davis**  
CALIFORNIA

**CITY OF DAVIS**  
PUBLIC WORKS ENGINEERING  
AND TRANSPORTATION DEPT

DESIGNED BY:	DATE:
CHECKED BY:	DATE:
DRAWN BY:	DATE:
SHEET 7 OF 11 SHEETS	
EXHIBIT 11	



VALVE BOX AND LID BY DRINKING FOUNTAIN MANUFACTURER. INSTALLED BY CONTRACTOR.

PVC SUPPLY LINE TO BRASS ASSEMBLY: MIN. 2' BRASS OR COPPER PIPE, THEN 3/4\"/>

CONNECT TO DRAINAGE LINE PER PLANS. IF CONNECTING TO SANITARY SEWER, INSTALL PER PLUMBING CODE WITH 'P' TRAP AND VENT AS REQUIRED.

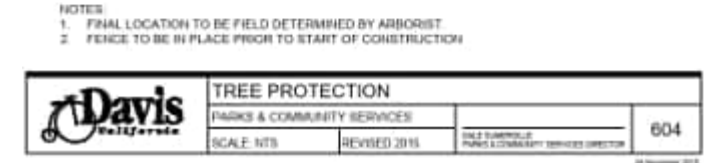
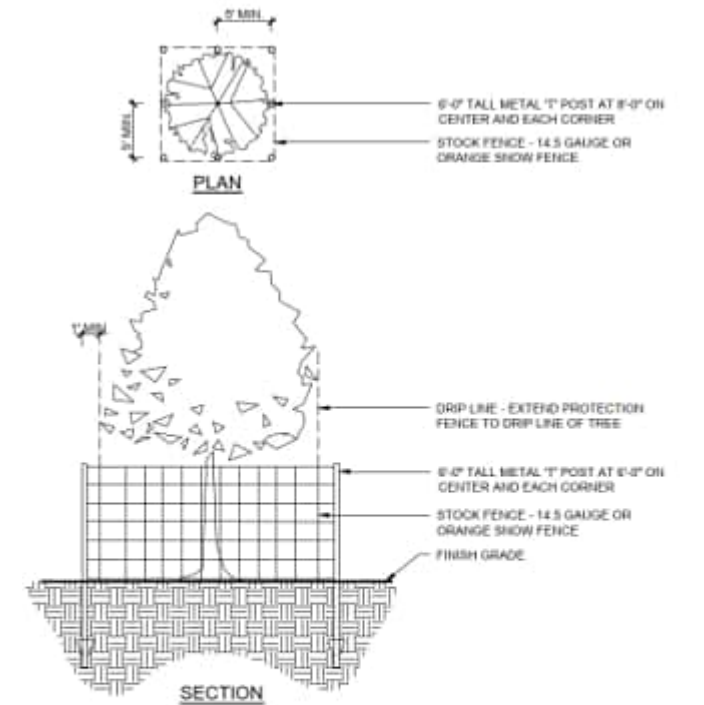
CONCRETE PAVING - SEE BIKE PATH P.C.C. CONSTRUCTION DETAIL THIS PAGE

THICKENED EDGE MIN. DEPTH EQUAL TO LENGTH OF CARRIER BOLTS (TYP. 12")



**Fountains**

MOST DEPENDABLE FOUNTAINS MODEL #440SMSS IN GREEN OR APPROVED EQUAL, WITH BOTTLE FILLER/JUG FILLER AND MANUFACTURER-SUPPLIED TEMPLATE FOR SURFACE ANCHORING.



**SECTION** Fountains

<b>DRINKING FOUNTAIN</b>		401	
PARKS & COMMUNITY SERVICES		DALE SUMERSILLE PARKS & COMMUNITY SERVICES DIRECTOR	
SCALE: NTS	REVISED 2015		

REV.	DATE	DESCRIPTION	BY
10-03-23		City Council Meeting	

**Details - Fountain & Paving**

C.I.P. No. ET0002



**CITY OF DAVIS**  
PUBLIC WORKS ENGINEERING  
AND TRANSPORTATION DEPT

DESIGNED BY:	DATE:
CHECKED BY:	DATE:
DRAWN BY:	DATE:
SHEET D1 OF 11 SHEETS	DWG. NO. 04C-12