

# Arroyo Park Sky Track

---

City Council Meeting  
August 30, 2022



## Actions this evening:

- Approve the recommendations from the Recreation and Park Commission:
- Relocate the Sky Track to location "B"
- Approve a resolution authorizing the City Manager to execute contracts:
  - Removal and re-installation of the Sky Track to location "B"
  - Purchase and installation of an obstacle courts to replace the existing Sky Track equipment



**Existing  
Sky Track  
Location**







DJUSD Property

A

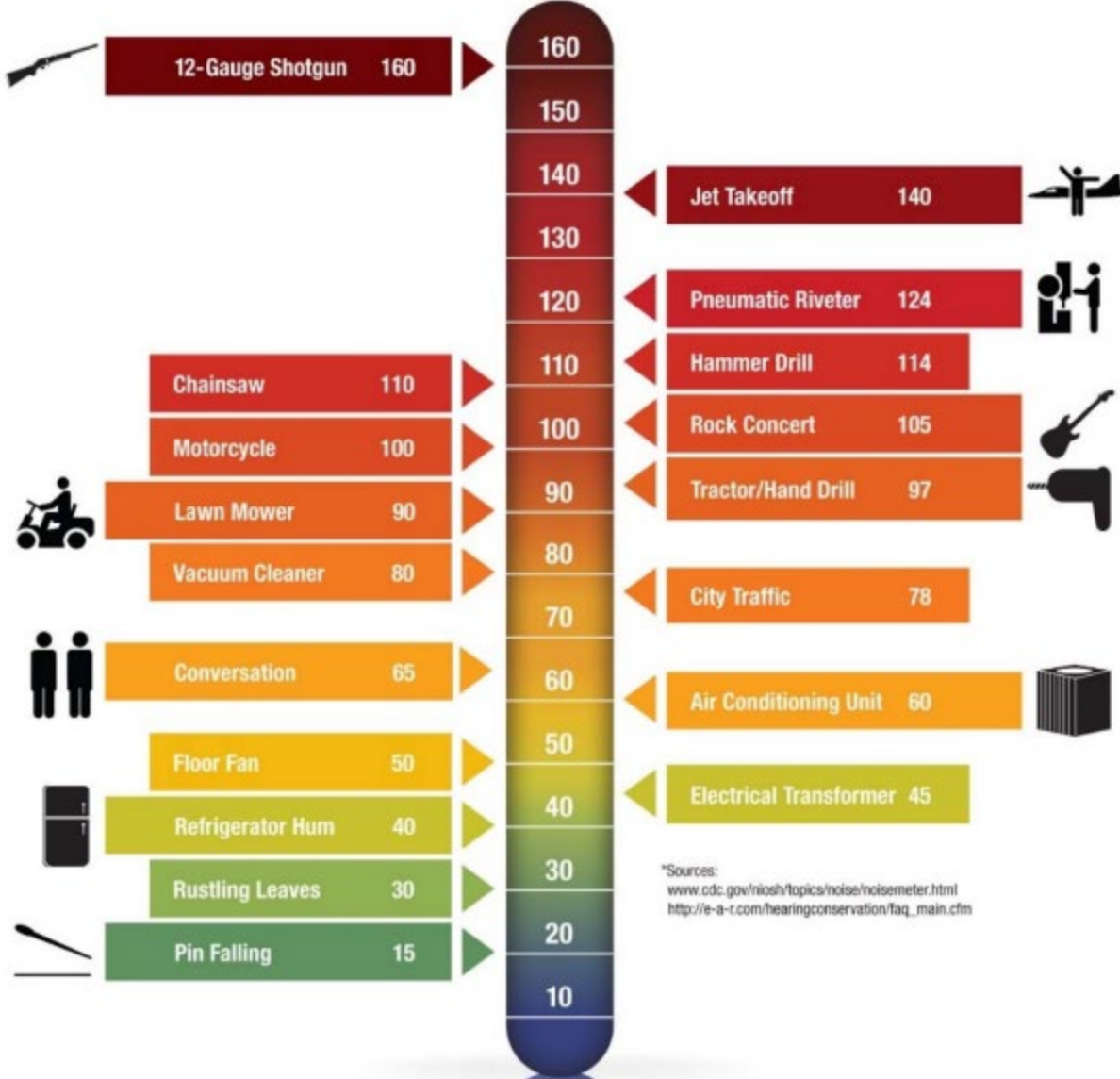
B

C

D

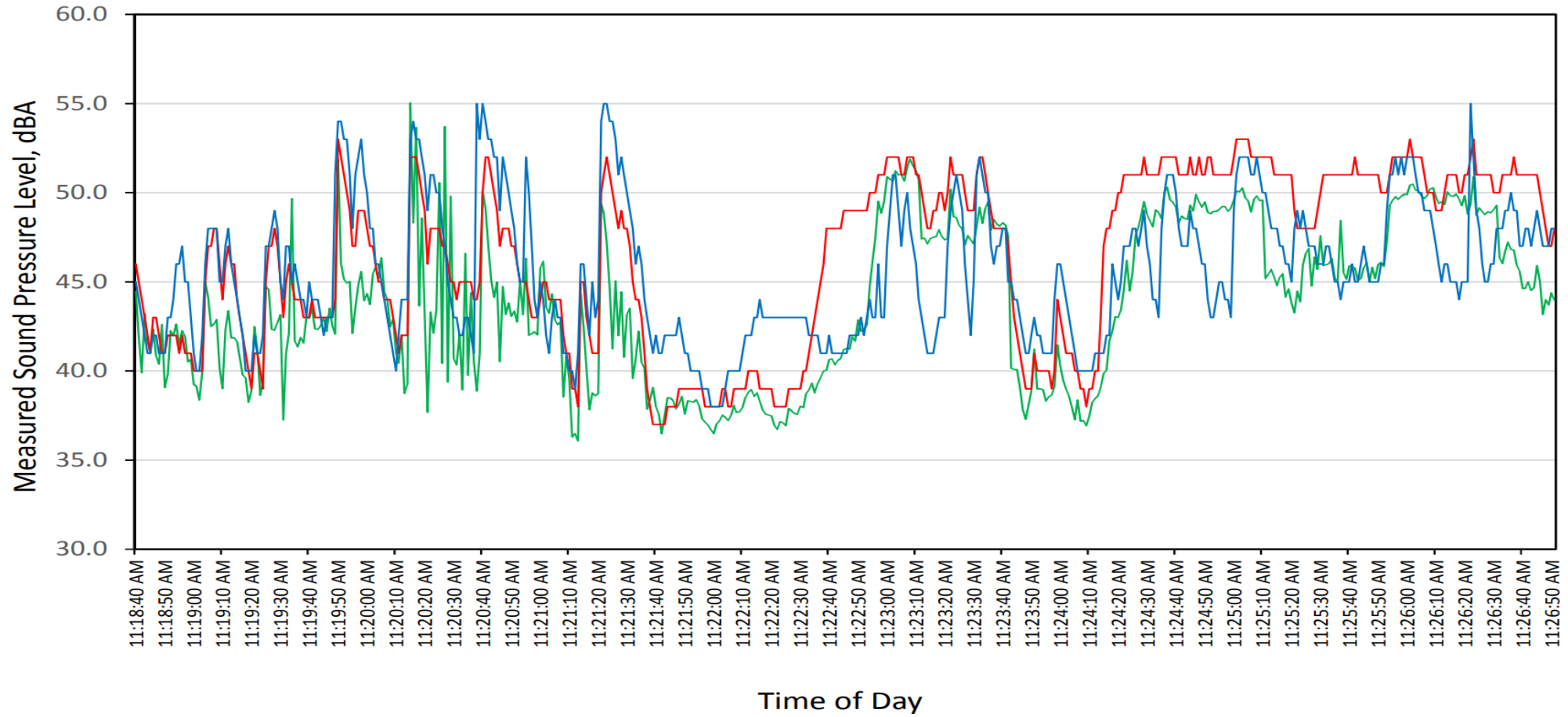


# Decibel Scale (dBA)\*



\*Sources:  
[www.cdc.gov/niosh/topics/noise/noisemeter.html](http://www.cdc.gov/niosh/topics/noise/noisemeter.html)  
[http://e-a-c.com/hearingconservation/faq\\_main.cfm](http://e-a-c.com/hearingconservation/faq_main.cfm)

Figure 3  
Arroyo Park Zipline Noise Measurement Results  
July 22, 2019



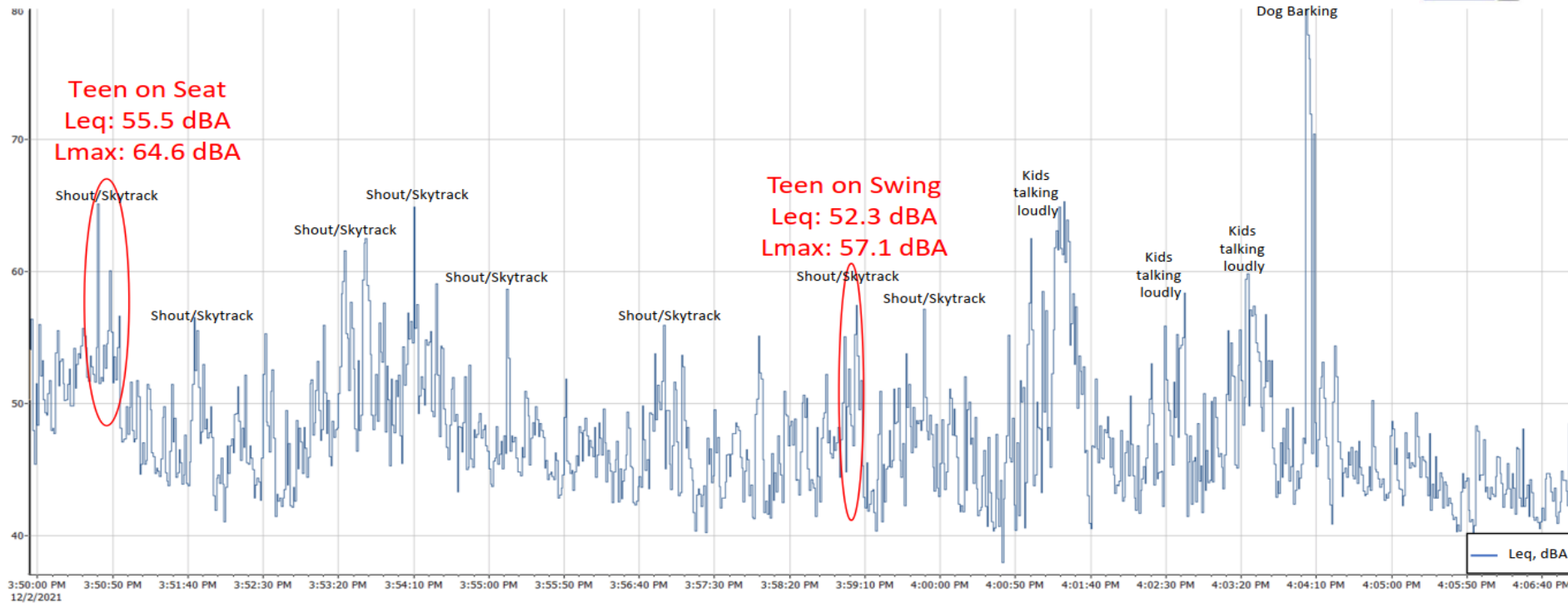
— Site 1      — Site 2      — Site 3

**Table 2. Measured Sky Track Noise**

Description	NM1	NM2	NM3	Near Field
	LAeq, dBA	LAeq, dBA	LAeq, dBA	LAeq, dBA
Kids on Swing and Seat	51.2	49.7	56.5	--
Adult pushing Kids Seat	50.4	49.9	55.4	--
2 Adults pushing Kids 2 Swing and Seat	53.2	53.1	60.2	--
1 Adult pushing Kid Swing	53.2	51.8	56.2	--
1 Adult pushing Teenage Kid Swing	50.5	46.3	53.5	--
Adult on Seat	53.8	48.1	62.1	--
Adult on Swing	52.1	49.2	55.7	--
Teenage Kid on Seat	55.5	54.0	61.5	--
Teenage Kid on Swing	49.3	49.6	56.0	--
Teenage Kid Seat 1ft away	47.0	46.1	--	72.6
Teenage Kid Seat 1ft away from Track	49.5	50.4	--	81.4
Teenage Kid Swing 1ft away	45.1	45.7	--	69.0
Teenage Kid Swing 1ft away	47.4	45.3	--	72.3
Teenage Kid Swing 1ft away from Track	52.3	50.3	--	81.1
Teenage Kid Swing 1ft away	49.5	48.7	--	75.1

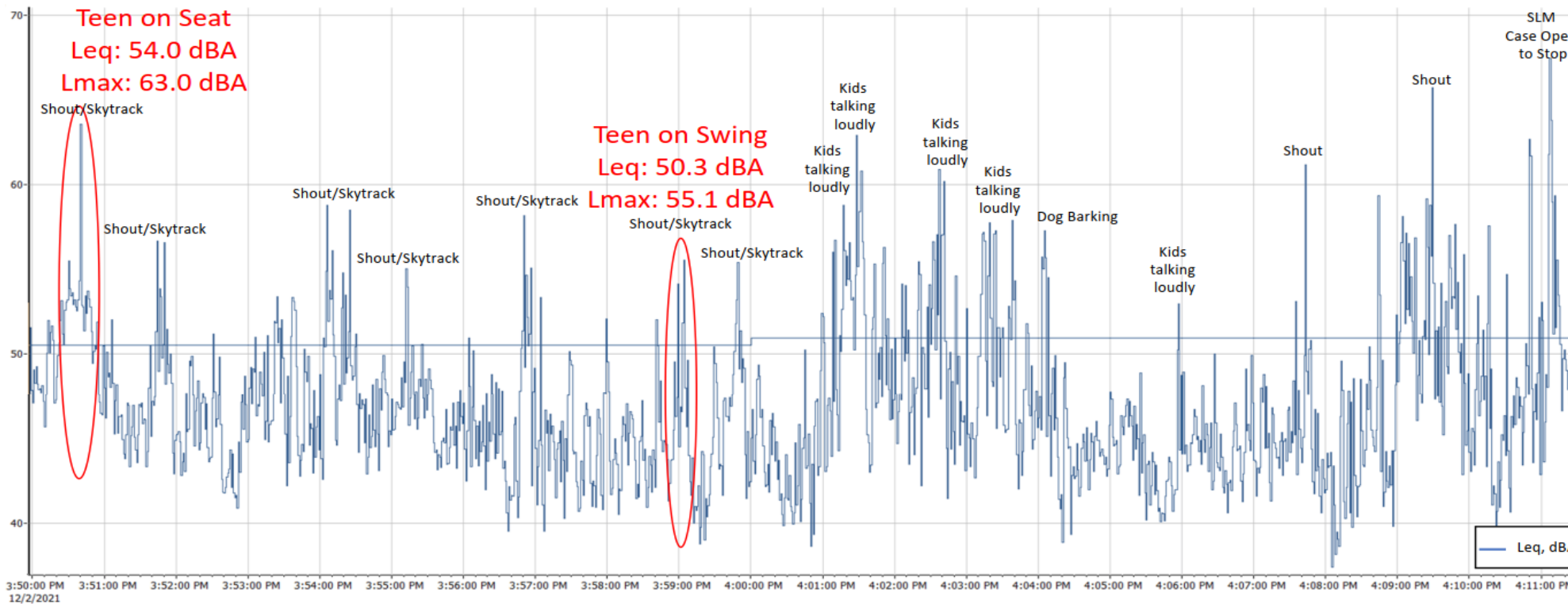


# City of Davis – Skytrack Noise Survey NM1



**ACOUSTICS GROUP, INC.**  
CONSULTANTS IN ACOUSTICS, NOISE & VIBRATION

# City of Davis – Skytrack Noise Survey NM2



**ACOUSTICS GROUP, INC.**  
CONSULTANTS IN ACOUSTICS, NOISE & VIBRATION

**Table 1. Measured Sky Track Lmax Noise**

Description	NM1	NM2	NM3	Near Field
	Lmax, dBA	Lmax, dBA	Lmax, dBA	<u>Lmax,</u> <u>dBA</u>
Kids on Swing and Seat	62.3	60.7	65.0	--
Adult pushing Kids Seat	58.4	57.4	68.6	--
2 Adults pushing Kids 2 Swing and Seat	62.4	62.7	71.2	--
1 Adult pushing Kid Swing	65.9	61.7	70.8	--
1 Adult pushing Teenage Kid Swing	57.0	54.8	61.1	--
Adult on Seat	61.5	54.0	70.4	--
Adult on Swing	56.6	52.4	60.5	--
Teenage Kid on Seat	64.6	63.0	70.9	--
Teenage Kid on Swing	56.0	56.7	63.3	--
Teenage Kid Seat 1ft away	51.7	51.1	--	76.6
Teenage Kid Seat 1ft away from Track	55.7	57.4	--	88.7
Teenage Kid Swing 1ft away	48.9	51.1	--	73.4
Teenage Kid Swing 1ft away	54.5	51.8	--	78.1
Teenage Kid <u>Swing</u> 1ft away from Track	57.1	55.1	--	88.0
Teenage Kid Swing 1ft away	55.6	55.8	--	84.8

**Table 2. Arroyo Community Park Sky Track Predicted Operating Lmax Noise Levels**

Receptor	Sky Track Lmax Noise Level Location, dBA	Predicted Sky Track Lmax Noise Level at Alternative Locations, dBA			
		<u>Location A</u>	Location B	Location C	Location D
1880 Imperial Ave Rear Property Line (NM1)	64.6	44.3	56.6	56.2	53.7
1868 Imperial Ave Rear Property Line (NM2)	63.0	43.3	55.1	55.7	52.8
Playground West of Sky <u>Track</u> (NM3)	70.9	45.0	61.7	60.0	57.0
<u>Nearest Residences</u> to the North Property Line	--	56.9	56.5	56.9	60.6
<u>Nearest Residences</u> to the South Property Line	--	56.7	56.9	56.1	53.9
<u>Nearest Residences</u> to the East Property Line	--	41.6	52.0	54.8	52.8
<u>Nearest Residences</u> to the West Property Line	--	65.1	--	43.4	--
Arroyo Community Pool	--	48.8	68.8	60.8	63.9



**Table 3. Existing Location Impact Assessment**

Receptor	Predicted Lmax Noise Level at Sky Track Location, dBA	City of Davis Residential Lmax Noise Standard (Day/ Nighttime), dBA	Impact Assessment
	Existing Location		
1880 Imperial Ave Rear Property Line (NM1)	64.6	75/70	Compliance/ Compliance
1868 Imperial Ave Rear Property Line (NM2)	63.0	75/70	Compliance/ Compliance
Playground West of Sky <u>Track</u> (NM3)	70.9	--	--

**Table 4. Alternative Location A Impact Assessment**

Receptor	Predicted Lmax Noise Level at Alternative Sky Track Location, dBA	City of Davis Residential Lmax Noise Standard (Day/ Nighttime), dBA	Impact Assessment
	Location <u>A</u>		
1880 Imperial Ave Rear Property Line (NM1)	44.3	75/70	Compliance/ Compliance
1868 Imperial Ave Rear Property Line (NM2)	43.3	75/70	Compliance/ Compliance
Playground West of Sky <u>Track</u> (NM3)	45.0	--	--
<u>Nearest Residences</u> to the North Property Line	56.9	75/70	Compliance/ Compliance
<u>Nearest Residences</u> to the South Property Line	56.7	75/70	Compliance/ Compliance
<u>Nearest Residences</u> to the East Property Line	41.6	75/70	Compliance/ Compliance
Patwin Elementary School Classroom Setback	65.1	--	--
Arroyo Community Pool	48.8	--	--

**Table 5. Alternative Location B Impact Assessment**

Receptor	Predicted Lmax Noise Level at Alternative Sky Track Location, dBA	City of Davis Residential Lmax Noise Standard (Day/ Nighttime), dBA	Impact Assessment
	Location B		
1880 Imperial Ave Rear Property Line (NM1)	56.6	75/70	Compliance/ Compliance
1868 Imperial Ave Rear Property Line (NM2)	55.1	75/70	Compliance/ Compliance
Playground West of Sky <u>Track</u> (NM3)	61.7	--	--
<u>Nearest Residences</u> to the North Property Line	56.5	75/70	Compliance/ Compliance
<u>Nearest Residences</u> to the South Property Line	56.9	75/70	Compliance/ Compliance
<u>Nearest Residences</u> to the East Property Line	52.0	75/70	Compliance/ Compliance
Arroyo Community Pool	68.8	--	--

**Table 6. Alternative Location C Impact Assessment**

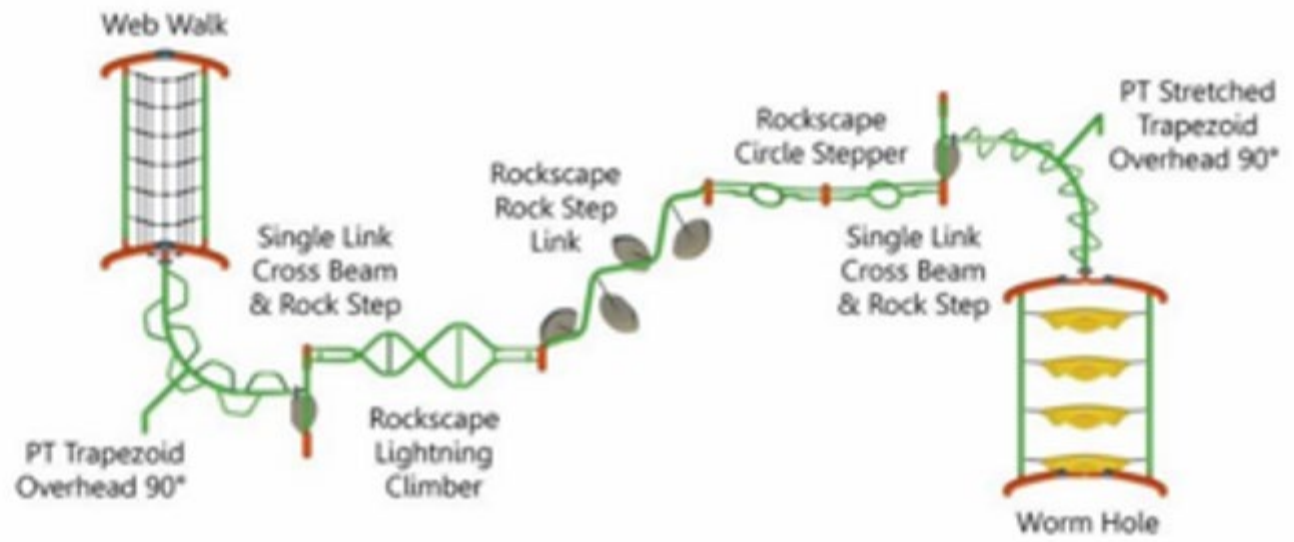
Receptor	Predicted Lmax Noise Level at Alternative Sky Track Location, dBA	City of Davis Residential Lmax Noise Standard (Day/ Nighttime), dBA	Impact Assessment
	Location C		
1880 Imperial Ave Rear Property Line (NM1)	56.2	75/70	Compliance/ Compliance
1868 Imperial Ave Rear Property Line (NM2)	55.7	75/70	Compliance/ Compliance
Playground West of Sky <u>Track</u> (NM3)	60.0	--	--
<u>Nearest Residences</u> to the North Property Line	56.9	75/70	Compliance/ Compliance
<u>Nearest Residences</u> to the South Property Line	56.1	75/70	Compliance/ Compliance
<u>Nearest Residences</u> to the East Property Line	54.8	75/70	Compliance/ Compliance
Patwin Elementary School Classroom Setback	43.4	--	--
Arroyo Community Pool	60.8	--	--



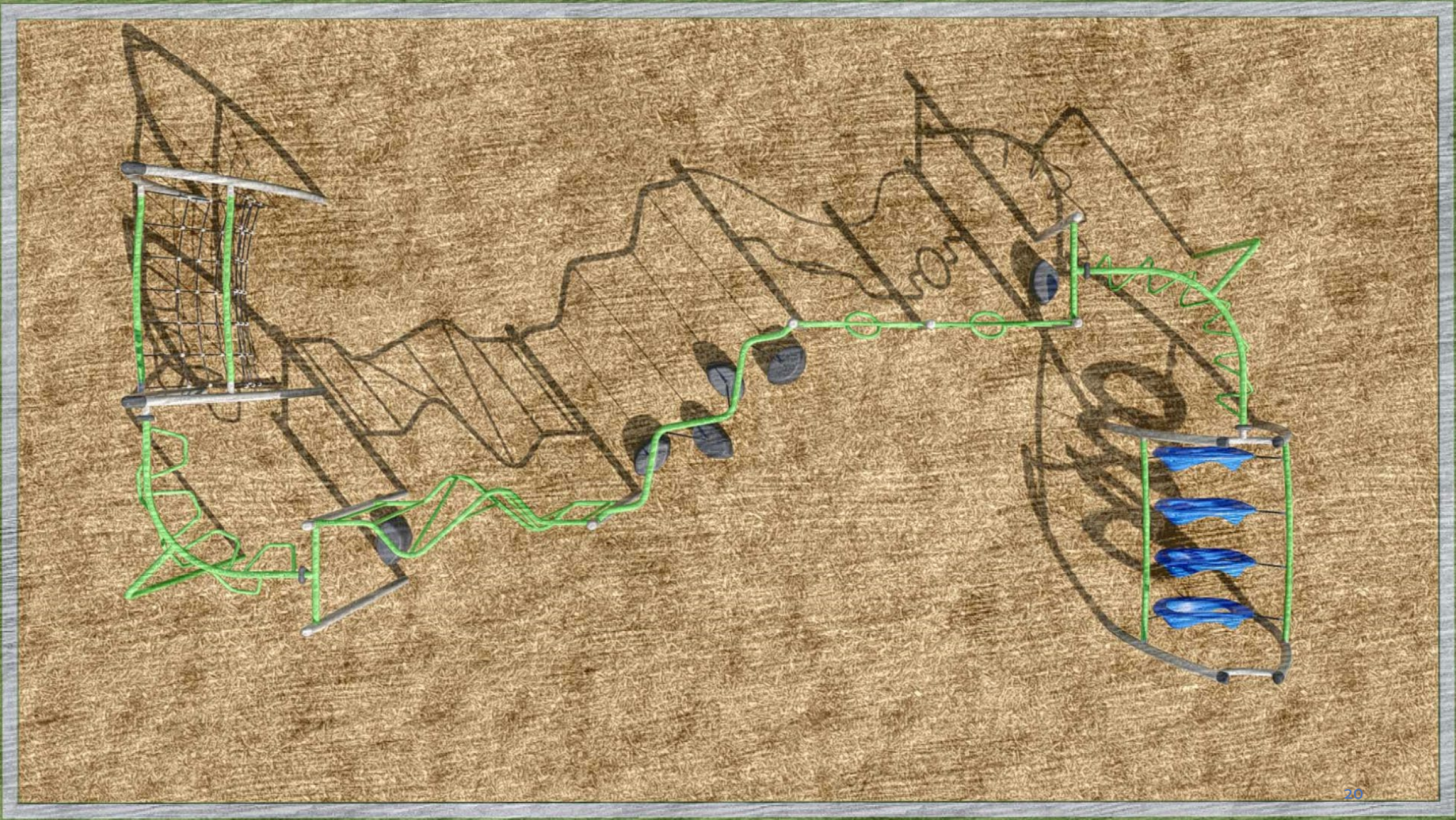
**Table 7. Location D Impact Assessment**

Receptor	Predicted Lmax Noise Level at Alternative Sky Track Location, dBA	City of Davis Residential Lmax Noise Standard (Day/ Nighttime), dBA	Impact Assessment
	Location D		
1880 Imperial Ave Rear Property Line (NM1)	53.7	75/70	Compliance/ Compliance
1868 Imperial Ave Rear Property Line (NM2)	52.8	75/70	Compliance/ Compliance
Playground West of Sky <u>Track</u> (NM3)	57.0	--	--
<u>Nearest Residences</u> to the North Property Line	60.6	75/70	Compliance/ Compliance
<u>Nearest Residences</u> to the South Property Line	53.9	75/70	Compliance/ Compliance
<u>Nearest Residences</u> to the East Property Line	52.8	75/70	Compliance/ Compliance
Arroyo Community Pool	63.9	--	--























# Next Steps

- Approve the recommendations from the Recreation & Park Commission:
- Direct staff to execute the contract for Recreation Services to relocate the Sky Track to location "B"
- Direct staff to order new equipment (Obstacle Course the same color theme as the existing play equipment) from Gametime for the current Sky Track location and to execute the contract for purchase and installation of the new equipment.