

## STAFF REPORT

**DATE:** March 11, 2021  
**TO:** Bicycling, Transportation, and Street Safety Commission  
**FROM:** Joseph Garcia-Long, Associate Civil Engineer  
**SUBJECT:** Proposed Sight Distance Safety Improvements at Covell Boulevard and L Street.

---

### **Recommendation**

Remove three trees within the median of Covell Boulevard at L Street

### **Background and Analysis**

Traffic safety concerns were received from residents regarding the signalized intersection at Covell Boulevard and L Street. The first concern received was that eastbound motorists were confusing the right arrow green signal to correspond with a through green signal due to sight obstructions for the through signal heads. Due to the existing horizontal curvature of Covell Boulevard approaching the intersection, trees within the center median, and a signal phase with a concurrent green right arrow and red through movement Staff is recommending safety improvements at this location.

Staff is recommending the removal of three trees within the median immediately adjacent to the intersection to eliminate potential sight obstructions as shown on Attachment 1. Staff will work with the Parks and Community Services Department and the Tree Commission as needed to implement this recommendation if approved. The Federal Highway Administration recommends no plantings having foliage between 2 ft and 8 ft in height be present within sight distance triangles. Staff is recommending replacing the trees with plantings less than two feet in height or to mitigate their removal at another location within the City.

Staff is currently evaluating a second request at this intersection to continue the eastbound on-street bike lanes through the intersection in addition to the existing bike exit ramp and crosswalk. An update on this request will be provided to the BTSSC at a later date.

Alternatives to removal of trees within the median include reconfiguring the signal heads and signal phases, however these would not address the sight distance obstructions noted. An analysis of the recommended improvements and alternatives can be found in the table below.

Improvement	Benefits	Drawbacks
Removal of Trees Within Median	<ul style="list-style-type: none"> <li>• Low Cost (Estimated at \$3,000 - \$5,000).</li> <li>• Removal of sight obstructions</li> <li>• No impacts to new signal</li> </ul>	
Relocate or Reconfigure Signal Heads	<ul style="list-style-type: none"> <li>• Increase visibility of signal phase permitted and prohibited movements.</li> </ul>	<ul style="list-style-type: none"> <li>• Higher Design and Construction Costs</li> <li>• Potential for cluttered or confusing signal heads</li> <li>• Significant alterations to new signal</li> </ul>
Change Signal Phases to Concurrent Through and Right Turn Movements	<ul style="list-style-type: none"> <li>• No conflicts for eastbound motorists through intersection.</li> </ul>	<ul style="list-style-type: none"> <li>• Higher Design Costs</li> <li>• Less efficient intersection operations.</li> <li>• Significant alterations to new signal</li> </ul>

**Attachments**

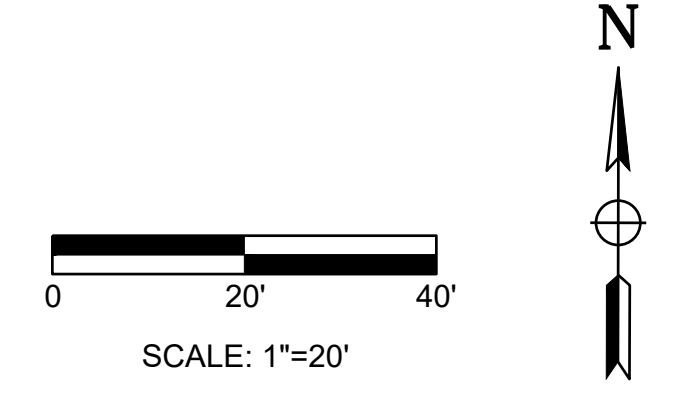
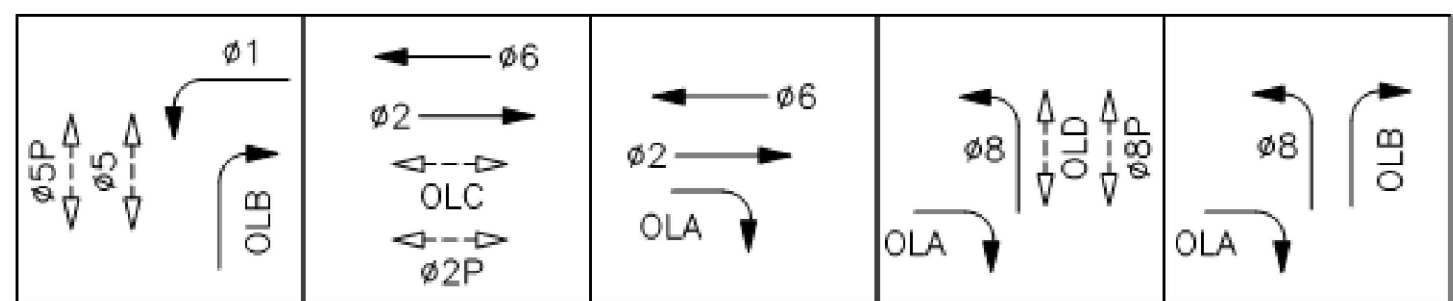
1. Covell Boulevard and L Street Location Map



**LEGEND**

- EXISTING SIGNAL POLE
- EXISTING SIGNAL HEAD (THROUGH MOVEMENT)
- ◆ EXISTING SIGNAL HEAD (RIGHT MOVEMENT)

**PHASE DIAGRAM**



REV.	DATE	DESCRIPTION	BY

**COVELL BOULEVARD AND L STREET LOCATION MAP**



**CITY OF DAVIS**  
 PUBLIC WORKS DEPARTMENT  
 1717 5TH STREET  
 PHONE (530)757-5686 FAX (530)758-4738

DESIGNED BY:	DATE:
CHECKED BY:	DATE:
DRAWN BY: J. Long	DATE:
SHEET 1 OF 1 SHEETS	
DWG. NO.	