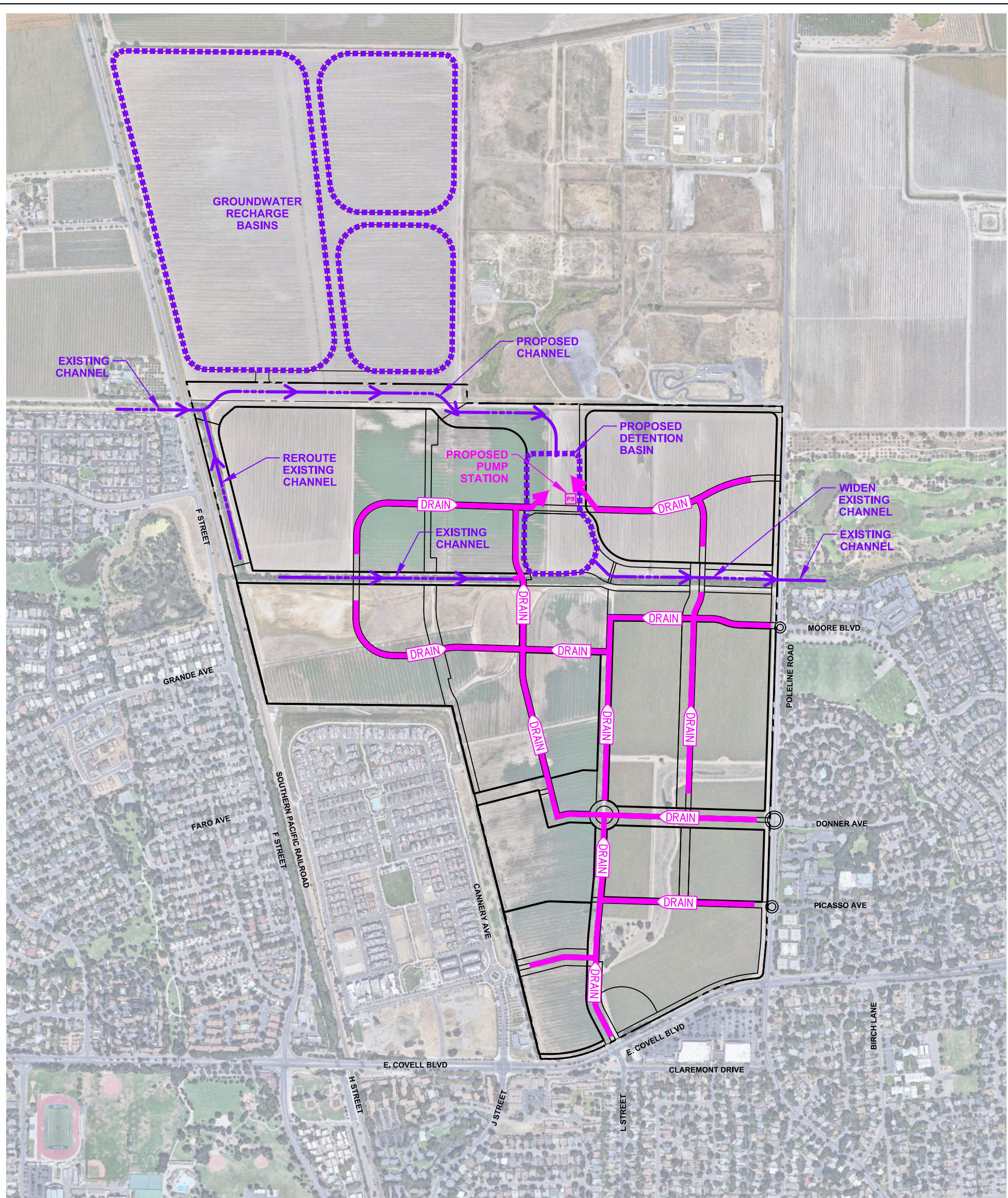


S:\Projects\1900\1902_Village Farms\AutoCAD\1902-01 Due Diligence\EXHIBITS\UTILITY STUDY\1902-00-01 STORM EXHIBIT.dwg - 11X17 7/24/2023 - 3:03PM Plotted by: Brian

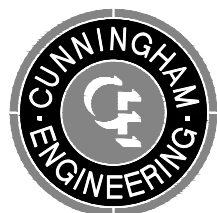


NOTES

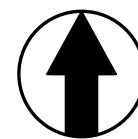
1. SITE AERIAL IMAGERY TAKEN IN JUNE 2021 AND WAS ACQUIRED MAY 13, 2020 FROM GOOGLE EARTH PRO. COPYRIGHT GOOGLE, 2015.
2. CONCEPTS SHOWN ON THIS EXHIBIT ARE PRELIMINARY IN NATURE AND ARE SUBJECT TO CHANGE BASED ON FINAL DESIGN.

LEGEND

- PROPOSED STORM DRAIN PIPELINE
- - - -> OPEN CHANNEL CONVEYANCE



**VILLAGE FARMS DAVIS
DRAINAGE INFRASTRUCTURE
EXHIBIT**



0 400 800
SCALE: 1" = 800'

SHEET 11.3

DATE: 07/17/23