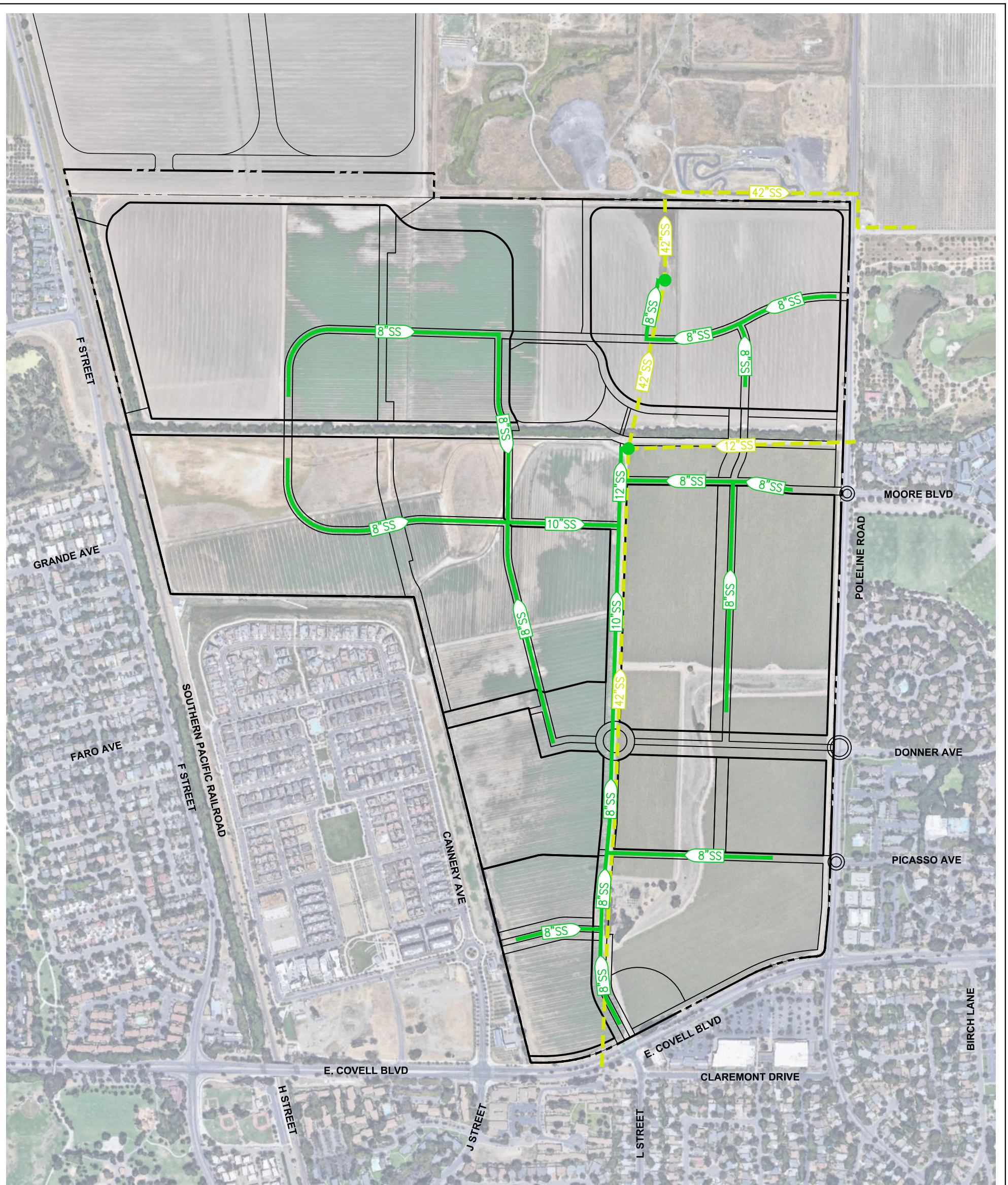


S:\Projects\1900\1902_Village Farms\AutoCAD\1902-01 Due Diligence\EXHIBITS\UTILITY STUDY\1902-00-01 SEWER EXHIBIT.dwg - 11X17 7/24/2023 - 3:03PM Plotted by: Brian

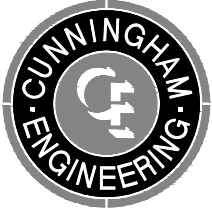


NOTES

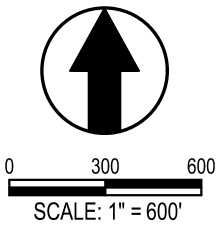
- 1. SITE AERIAL IMAGERY TAKEN IN JUNE 2021 AND WAS ACQUIRED MAY 13, 2020 FROM GOOGLE EARTH PRO. COPYRIGHT GOOGLE, 2015.
- 2. CONCEPTS SHOWN ON THIS EXHIBIT ARE PRELIMINARY IN NATURE AND ARE SUBJECT TO CHANGE BASED ON FINAL DESIGN.

LEGEND

- PROPOSED SEWER PIPELINE
- - - - - EXISTING SEWER PIPELINE
- POINT OF CONNECTION AT EXISTING MANHOLE



**VILLAGE FARMS DAVIS
SEWER INFRASTRUCTURE
EXHIBIT**



SHEET 11.1
DATE: 07/17/23