

PARKING SUMMARY
 PER CITY PARKING REQUIREMENTS
 DAVIS MUNICIPAL CODE (40.25.010:W)

REQUIRED:
 RETAIL : 1 STALL / 350 SF
 TOTAL RETAIL AREA: 150 K SF

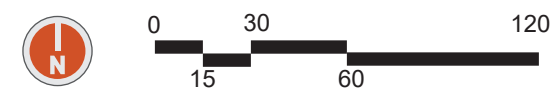
$150,000 / 350 = 429$ STALLS RQUIRED

RESIDENTIAL: 1 STALL / UNIT
 TOTAL RESIDENTIAL UNITS: 264 DU
 $264 \times 1 = 264$ STALLS REQUIRED

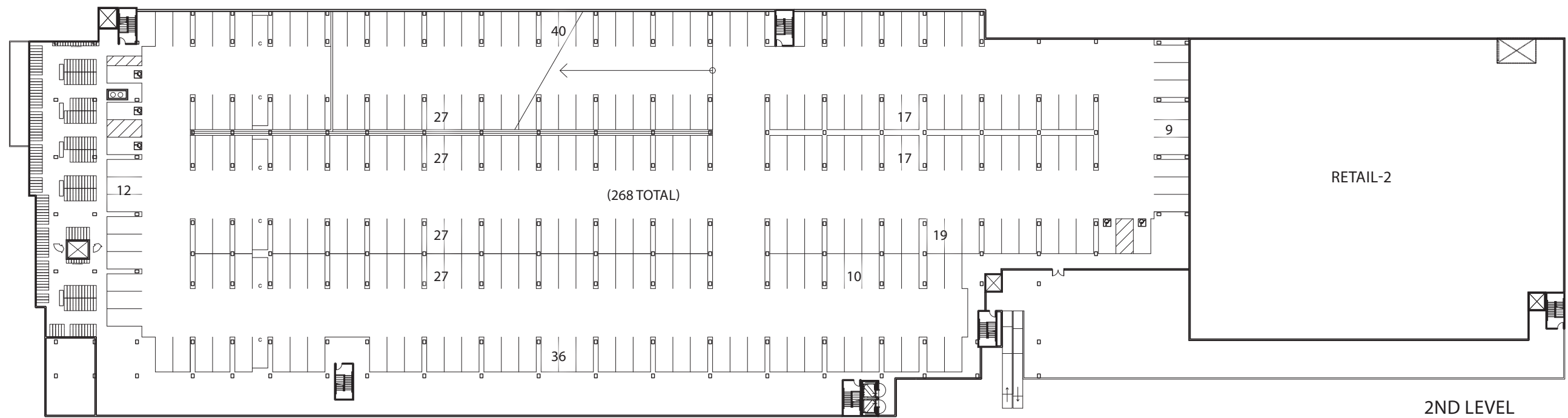
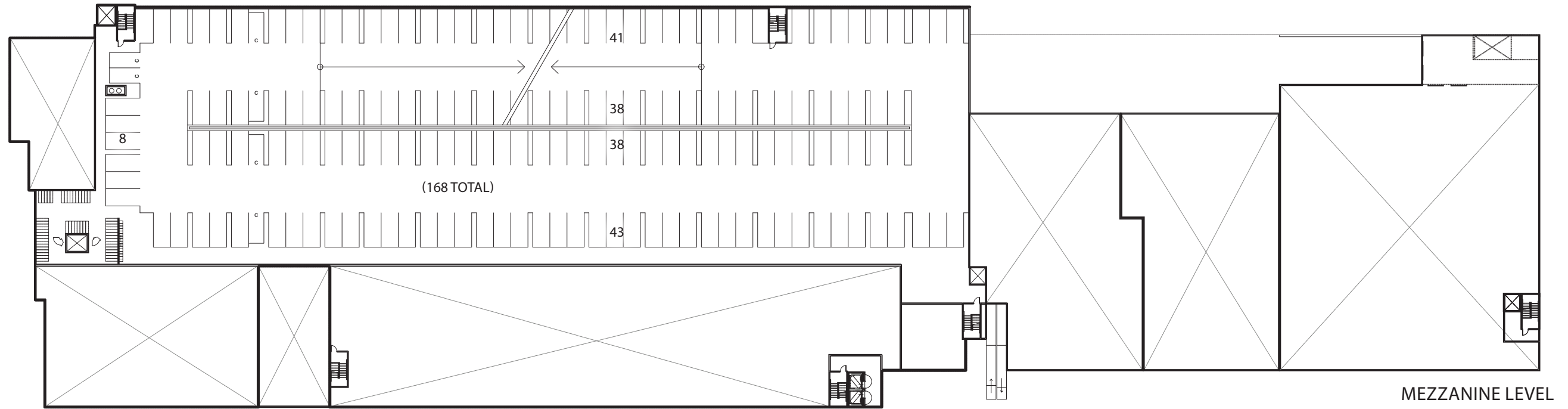
TOTAL PARKING REQUIRED : 693 STALLS

PROVIDED :

RETAIL (SURFACE) /	160 STALLS
RETAIL (GARAGE) /	269 STALLS
TOTAL:	429 STALLS
RESIDENTIAL (GARAGE) /	264 STALLS
GRAND TOTAL /	693 STALLS



PARKING PLAN - STREET LEVEL



PARKING PLAN - UPPER LEVELS

DAVIS, CA

ADC#180035

03-23-2020