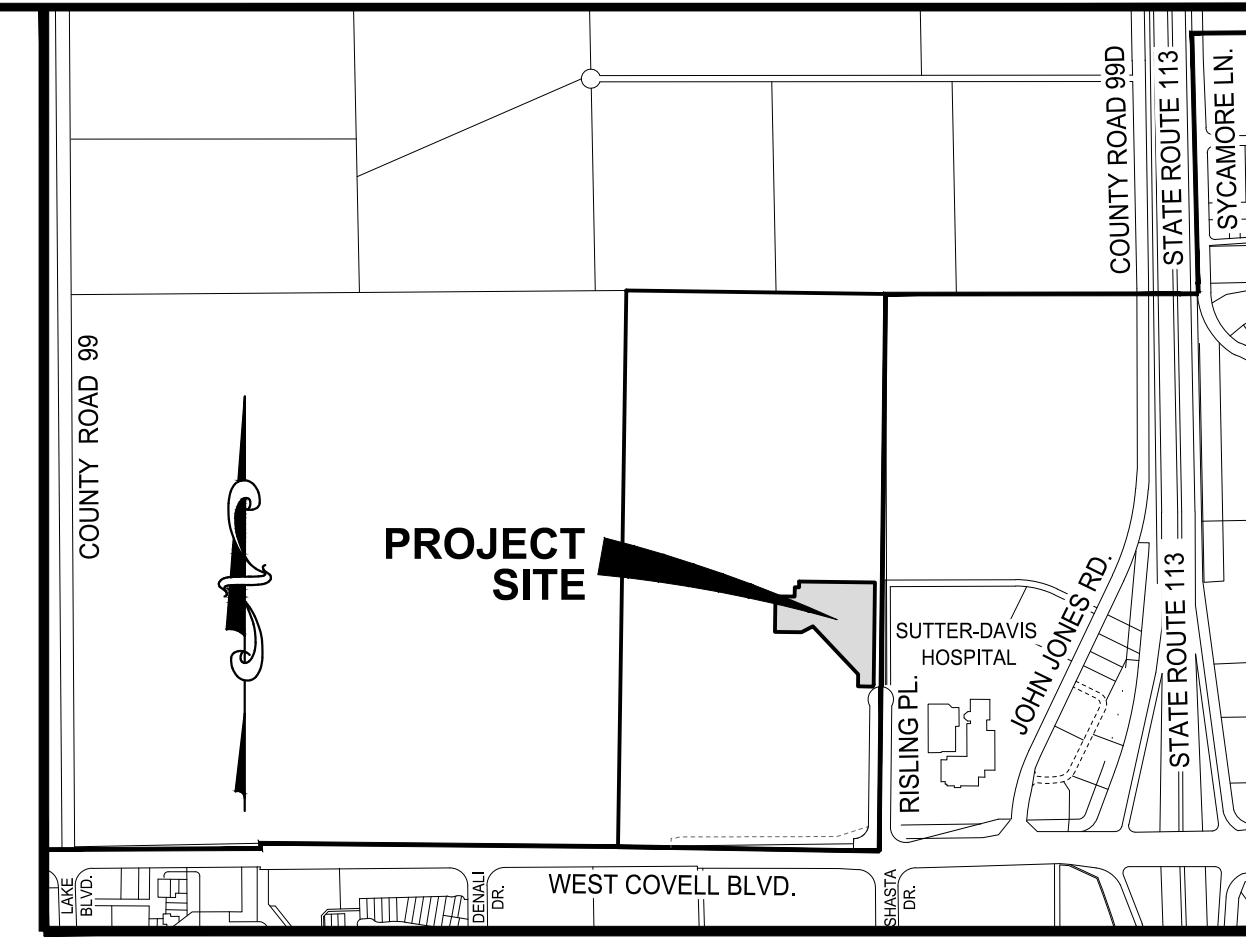
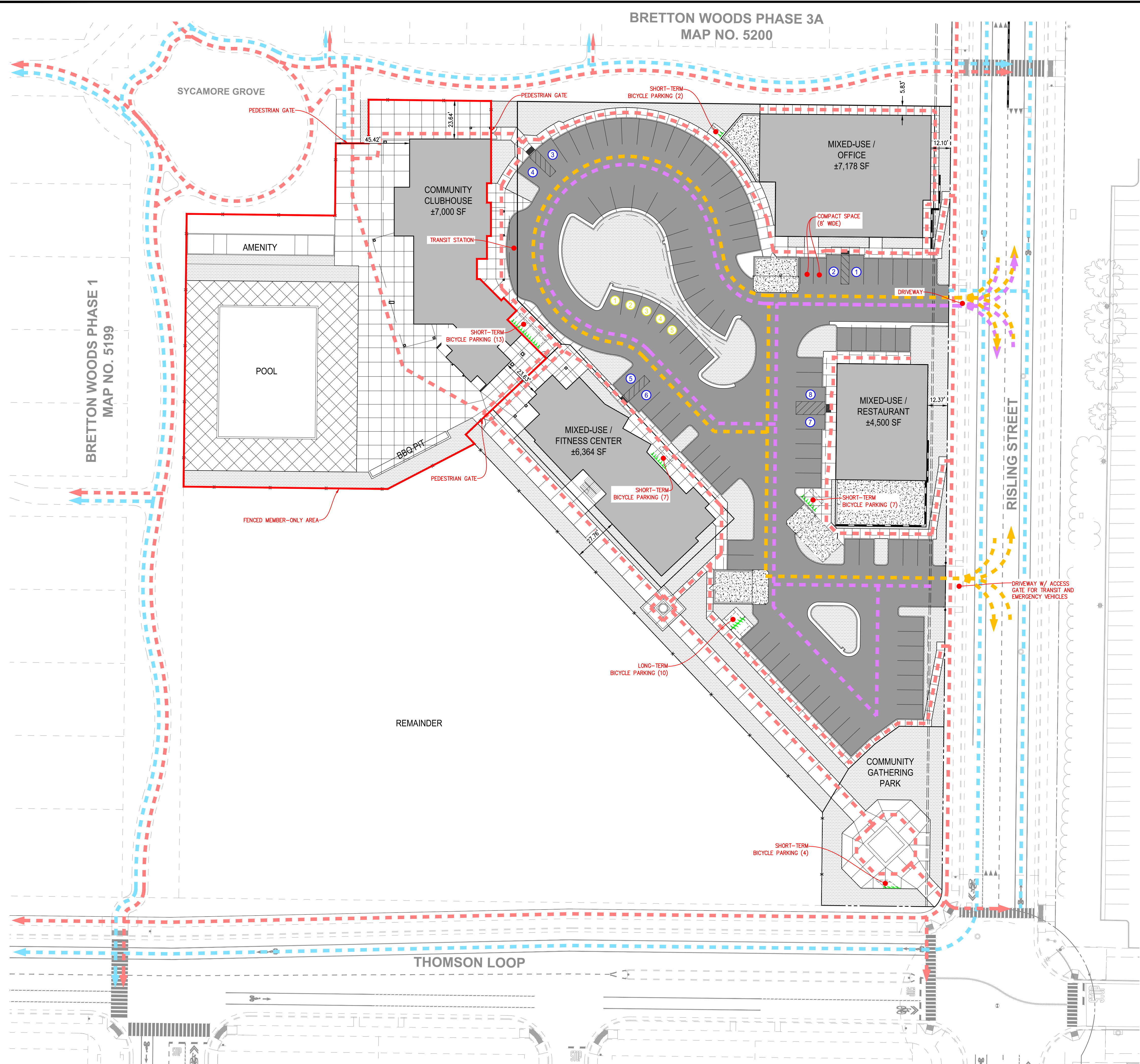


BRETTON WOODS PHASE 3A
MAP NO. 5200

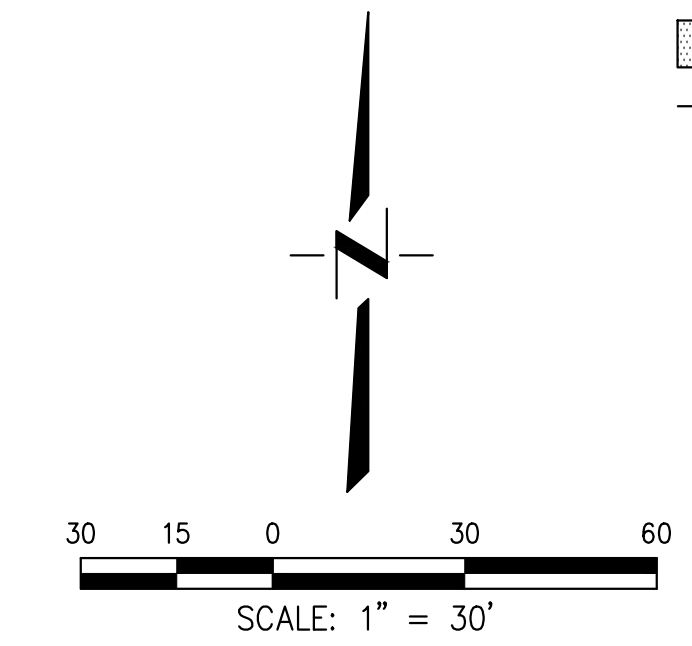


VICINITY MAP
NTS

| PARKING SUMMARY | |
|------------------------------|-------------|
| | PROVIDED |
| STANDARD SPACES | 72 |
| COMPACT SPACES | 2 |
| ADA SPACES | 8 |
| EV CHARGING SPACES | 5 |
| CLEAN AIR SPACES | 8 |
| OFFSITE SPACES | 16 |
| TOTAL VEHICLE PARKING SPACES | 111 (95+16) |
| SHORT-TERM BICYCLE PARKING | 33 |
| LONG-TERM BICYCLE PARKING | 10 |
| TOTAL BICYCLE PARKING | 43 |

LEGEND

- - - PEDESTRIAN ROUTE
- - - BICYCLE ROUTE
- - - MOTOR VEHICLE ROUTE
- - - TRANSIT VEHICLE AND EMERGENCY VEHICLE ROUTE
- ⊗ ADA PARKING SPACE
- ⊗ EV CHARGING PARKING SPACE
- PROPOSED BUILDING
- PROPOSED AC
- PROPOSED LANDSCAPING
- x FENCE



PRELIMINARY SITE PLAN

| | | | |
|--|---|------------------------|--|
| | CECWEST.COM | | PROJECT: BRETTON WOODS PHASE 3B AWC |
| | Project Planning ■ Civil Engineering ■ Landscape Architecture ■ Sacramento Office ■ Davis Office 2120 20th Street, Suite Three 2940 Spafford Street, Suite 200 Sacramento, CA 95818 Davis, CA 95618 (916) 455-2026 (530) 758-2026 | | DESCRIPTION: SITE PLAN EXHIBIT |
| | | | DATE: 01/29/2021 |
| | | | BY: KM |
| | | | JOB NO: 1594.01.23 |
| | | SCALE: AS SHOWN | SHEET 1 |

S:\Projects\1594\1594-01-23-Phase 3B AWC-Entitlement\1594-01-23-Phase 3B AWC-Entitlement\1594-01-23-Phase 3B AWC-Entitlement.dwg - SITE 1/29/2021 - 12:00AM Plotted by: keaton