



Bretton Woods

LANDSCAPE DETAILS

PROJECT SITE

1. Overall Site Plan

PROJECT WELCOMING

2. West Covell Boulevard

EVERYDAY LIVING

3. Greenway Homes
4. Single Loaded Greenway Homes

WALKABILITY

5. North / South Pedestrian Path
6. Art and Arboretum Walk
7. Art Node Enlargement
8. 50' Perimeter Trail Enlargement

ACTIVE LIVING

9. Activity and Wellness Center
10. Sycamore Grove
11. Vista Park
12. Dog Park
13. Pocket Park Rose Garden
14. Community Gathering Park
15. Western Detention Basin
16. Proposed Planting Palette

COVER SHEET
8-27-2020



CECWEST.COM
Project Planning • Civil Engineering • Landscape Architecture
Sacramento Office: 2120 20th Street, Suite 3100, Sacramento, CA 95818 (916) 455-2026
Davis Office: 2940 Spafford Street, Suite 200, Davis, CA 95618 (530) 758-2026



Overall Site Plan
 Bretton Woods active adult community in West Davis located at the northwest corner of Covell Boulevard, west of Sutter Davis Hospital and across the street from the University Retirement Center. Approximately 240 single family homes and 58 cottages with a variety of floor plans and square footage. 2.6 miles of shady walking and bike paths with opportunities to interact with the environment and enjoy the public art.

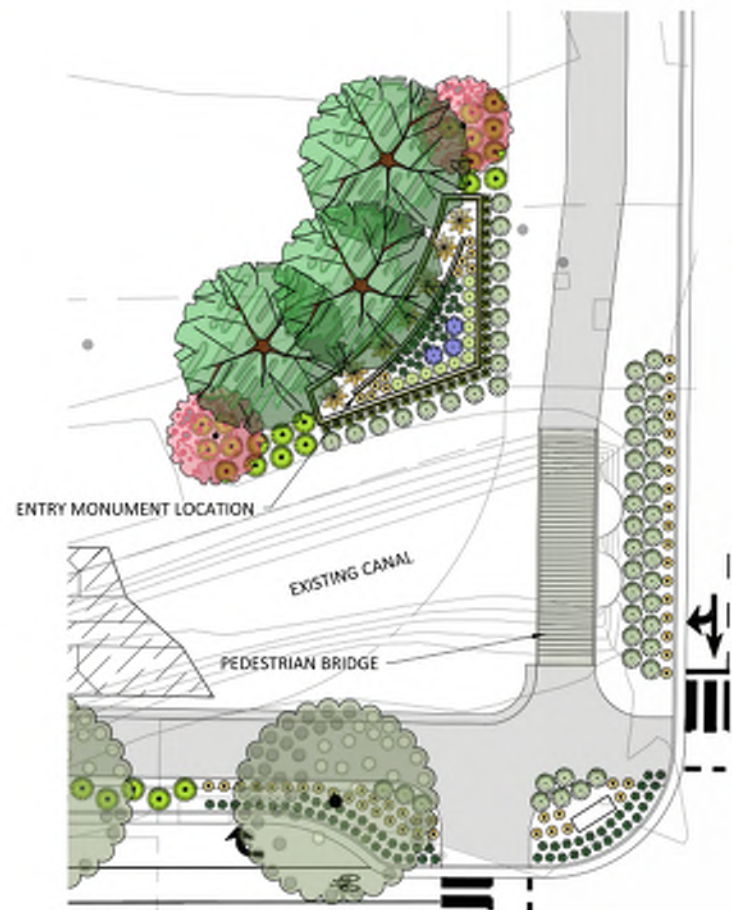
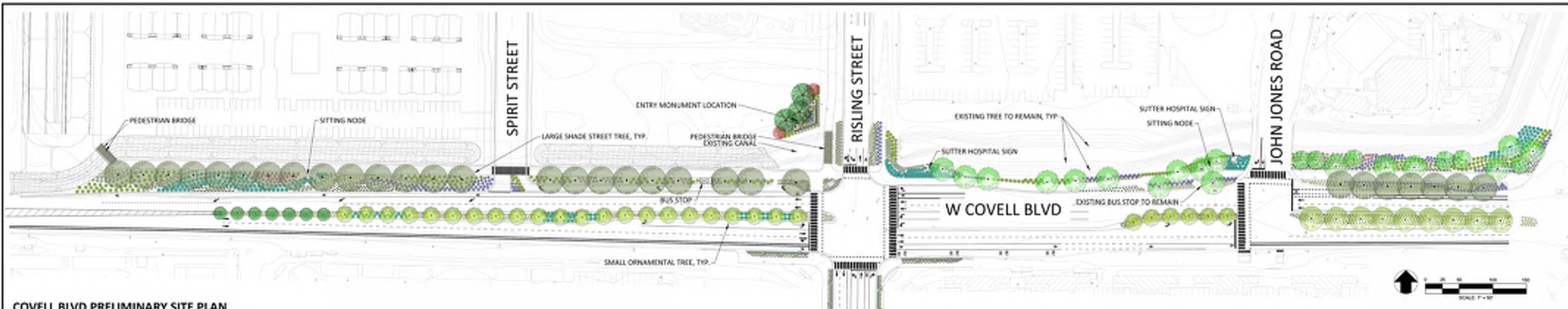


TENTATIVE SUBDIVISION MAP NO. 5180
BRETTON WOODS
 OVERALL PRELIMINARY SITE PLAN

DATE:	08/27/2020
SCALE:	AS SHOWN
DESIGNER:	DAVIS

1234567890
 Project Planning • Civil Engineering • Landscape Architecture
 200 2nd Street, Suite 200
 Sacramento, CA 95811
 (916) 433-2222

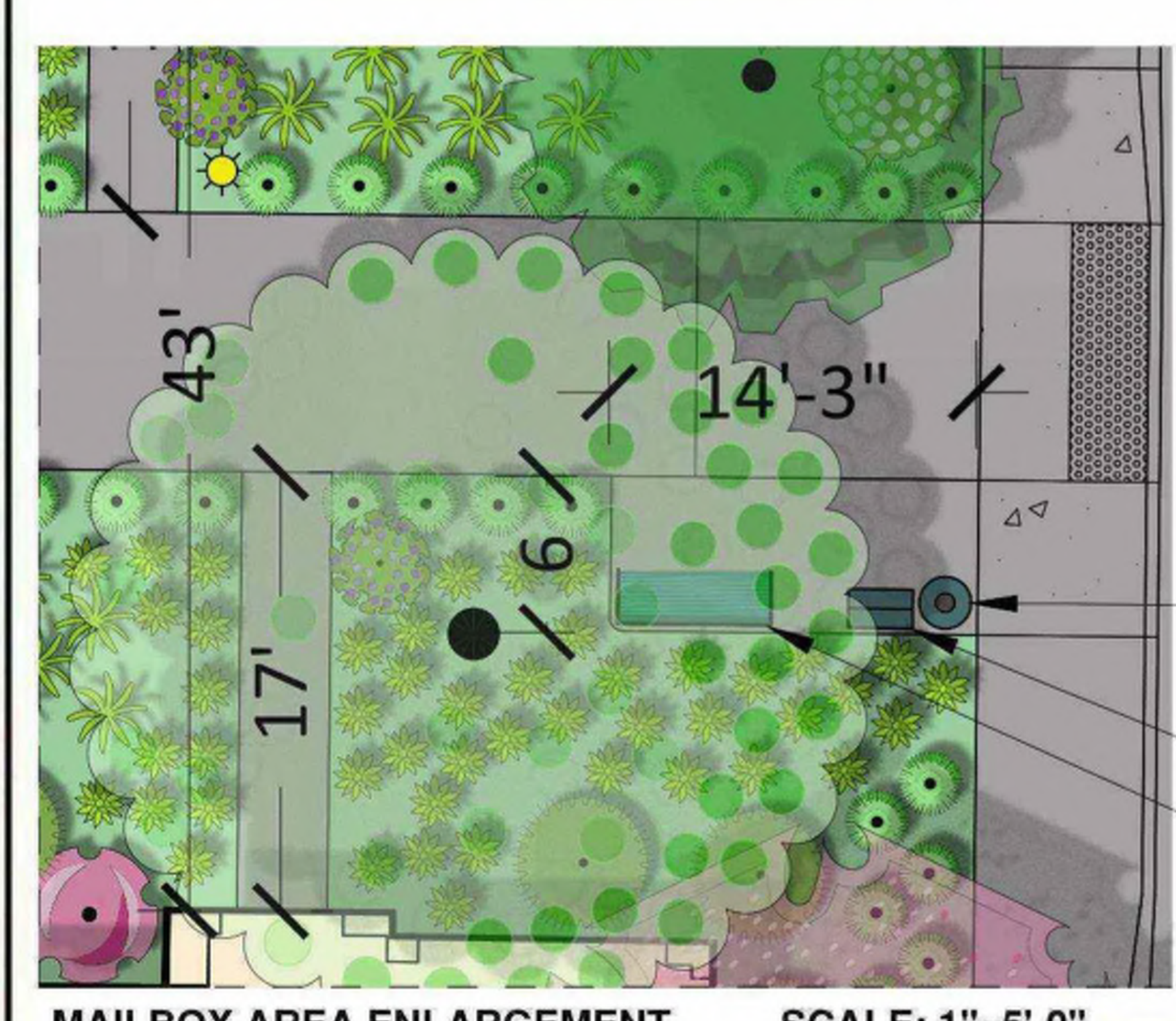
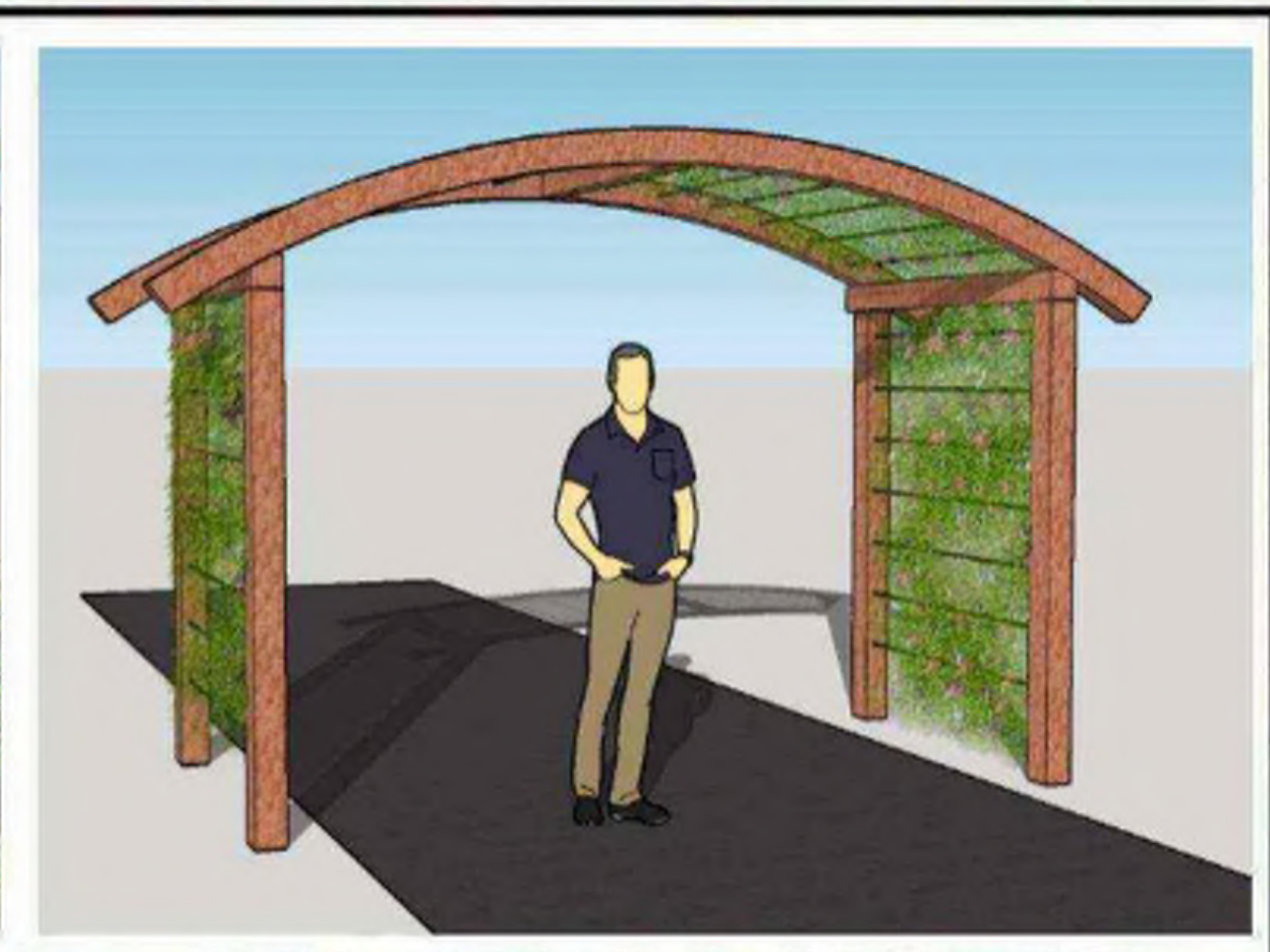
DATE:	08/27/2020
SCALE:	AS SHOWN
DESIGNER:	DAVIS
PROJECT:	BRETTON WOODS
DATE:	08/27/2020
JOB NO.:	1984.01.10



DESIGNED BY	ME
DRAWN BY	ME
CHECKED BY	ME
SCALE	AS SHOWN
DATE	DAVIS

**TENTATIVE SUBDIVISION MAP NO. 5180
BRETTON WOODS
COVELL BLVD PRELIMINARY LANDSCAPE PLANTING PLAN**

	PROJECT NO.	180411-10	SHEET 2 OF 16
	DATE	8.27.2020	
Project Planning & Civil Engineering & Landscape Architecture 1220 20th Street, Suite 100 Sacramento, CA 95811 (916) 451-2021	2040 Sutter Street, Suite 200 Davis, CA 95618 (530) 726-2028	JOB NO.	180411-10



Greenway Homes
 The Greenway Homes area situated in clusters overlooking a central meandering pedestrian pathway. The garages front the perimeter streets and the front doors face the greenbelt. The greenbelts include amenities such as an arbor trellis structure marking path entrances, seating nodes with park benches and waste receptacles, and a rose bush at each house. Vinyl privacy fencing separates landscaping between lots.

DESIGNED BY: JB
 DRAWN BY: JB
 CHECKED BY: ME
 SCALE: AS SHOWN
 DAVIS

**TENTATIVE SUBDIVISION MAP NO. 5180
 BRETTON WOODS
 TYPICAL GREENWAY HOMES PRELIMINARY SITE PLAN**

3 OF 16

Bretton Woods

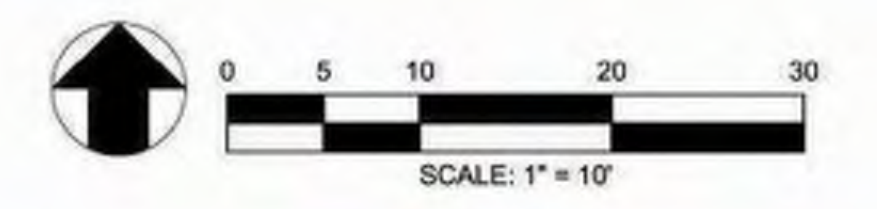
CECWEST.COM

NO.	DATE	REVISIONS	BY	APPROV.	SHEET
					3
					16

DATE: 8.27.2020
 JOB NO: 1594.01.10

Project Planning • Civil Engineering • Landscape Architecture
 • Davis Office
 2120 20th Street, Suite Three Sacramento, CA 95818 (916) 452-2028
 • Davis Office
 2940 Spafford Street, Suite 200 Davis, CA 95618 (530) 758-2028

\\Projects\1594 - West Oaks Active Addl Community\AutoCAD\1594-01-10 SMALL LOT (M)E\BRETTON\1594-01-10 Preliminary Plan.dwg - Layout1 8/27/2019 - 2:10PM Plotted by: jh



Single Loaded Greenway Homes
 Single-loaded Greenway Homes have both garages and porches which face the neighborhood streets with ample on-street parking. A vertical evergreen vine trellis will provide a green wall along the streetscape to buffer the pedestrians and homes from vehicles. Rose covered arched arbors will provide access through the green wall to the street for guests and parked vehicles. Each Single-loaded Greenway Home will have its own decorative light pole and rose bush planted for a small-town community feel.



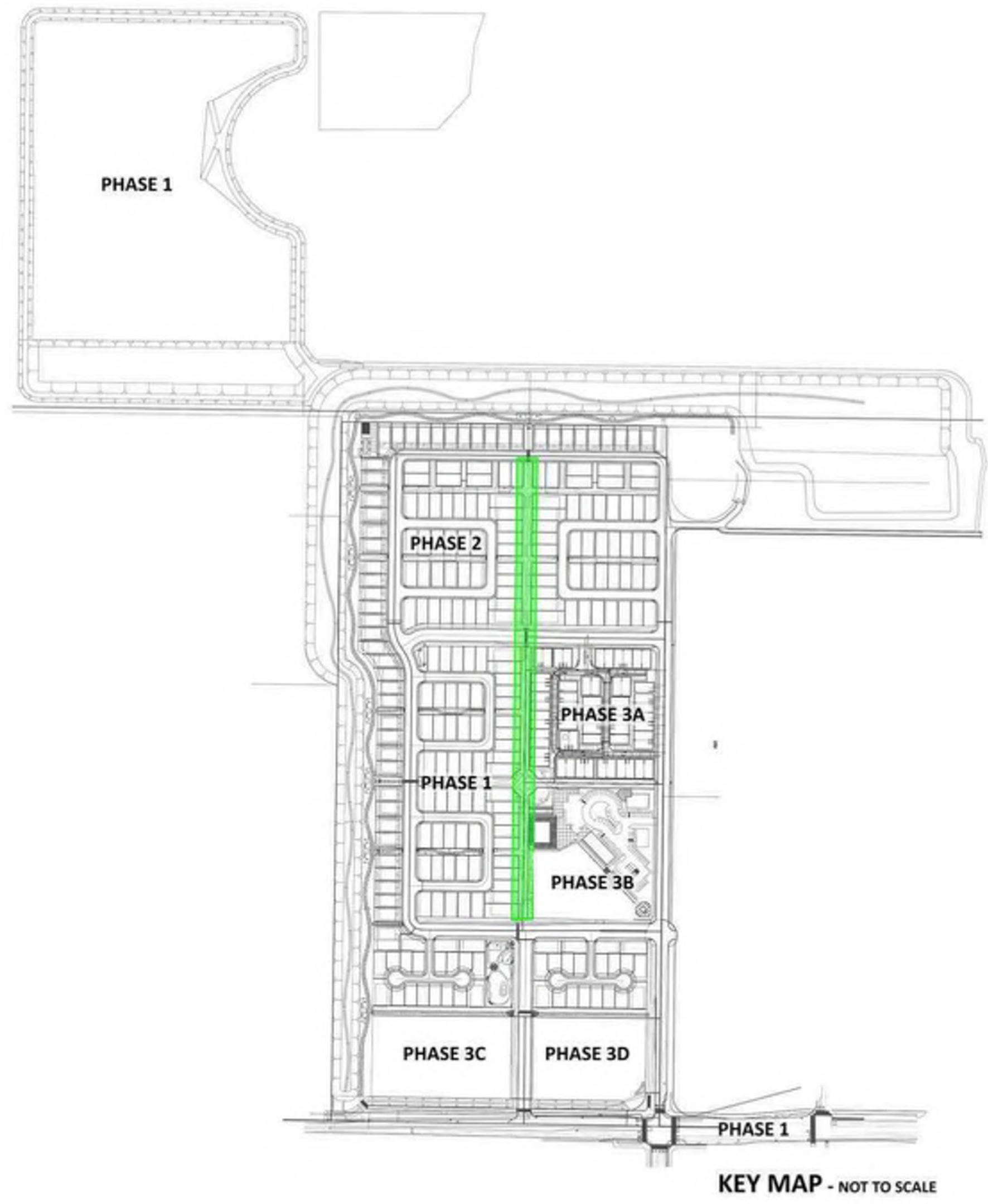
DESIGNED BY	JB
DRAWN BY	JB
CHECKED BY	ME
SCALE	AS SHOWN
DAVIS	

**TENTATIVE SUBDIVISION MAP NO. 5180
 BRETTON WOODS
 TYPICAL SINGLE LOADED GREENWAY HOMES PRELIMINARY SITE PLAN**

4 OF 16

<p>CUNNINGHAM ENGINEERING</p>	<p>Project Planning • Civil Engineering • Landscape Architecture</p> <p>2120 20th Street, Suite Three Sacramento, CA 95818 (916) 455-2028</p>	<p>2940 Spafford Street, Suite 200 Davis, CA 95618 (530) 758-2028</p>	<p>CECWEST.COM</p>	<table border="1"> <thead> <tr> <th>NO.</th> <th>DATE</th> <th>REVISIONS</th> <th>BY</th> <th>APPROV.</th> </tr> </thead> <tbody> <tr> <td> </td> <td> </td> <td> </td> <td> </td> <td> </td> </tr> <tr> <td> </td> <td> </td> <td> </td> <td> </td> <td> </td> </tr> <tr> <td> </td> <td> </td> <td> </td> <td> </td> <td> </td> </tr> </tbody> </table>	NO.	DATE	REVISIONS	BY	APPROV.																<p>SHEET 4 OF 16</p> <p>DATE: 8.27.2020 JOB NO: 1594.01.10</p>
	NO.	DATE	REVISIONS	BY	APPROV.																				

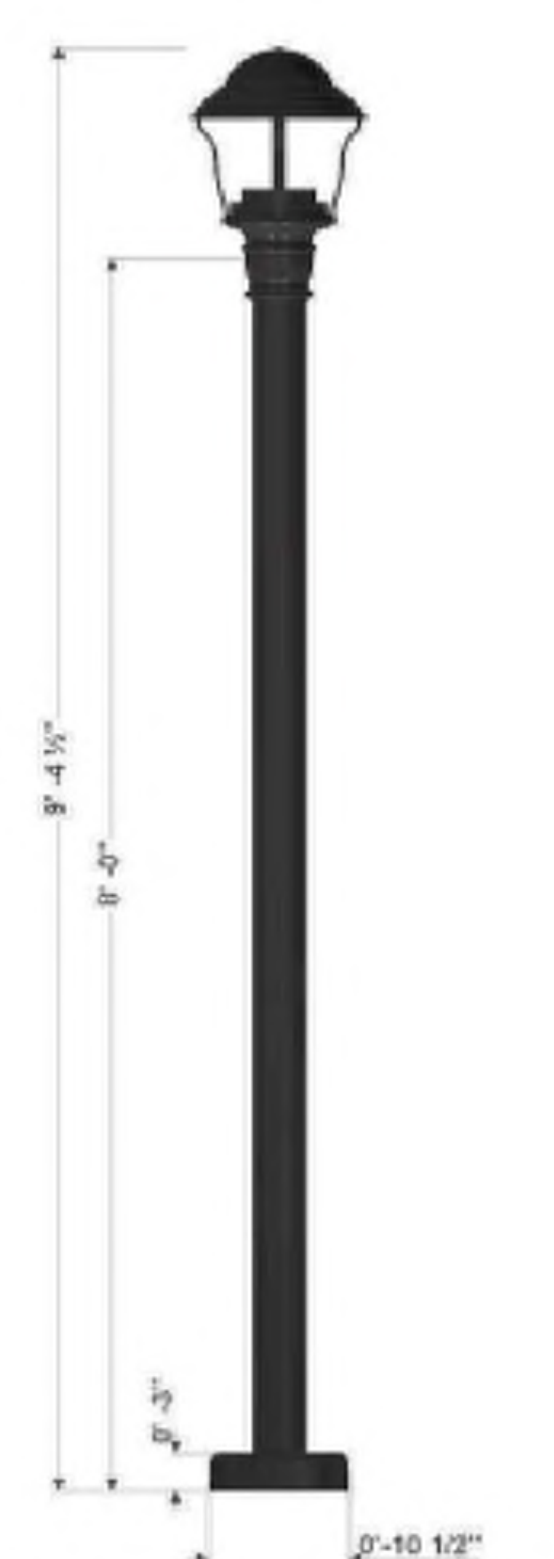
S:\Projects\1501\501 West Davis Active Adult Community\AutoCAD\1504-01-14-COVELL_BLDG\LANDSCAPE\BOARD TITLEBLOCK.dwg - Layout1 8/12/2018 9:35AM Plotted by: jn



ROSE SHRUB AT HOME ENTRY



6' TALL PRIVACY VINYL FENCE EXAMPLE

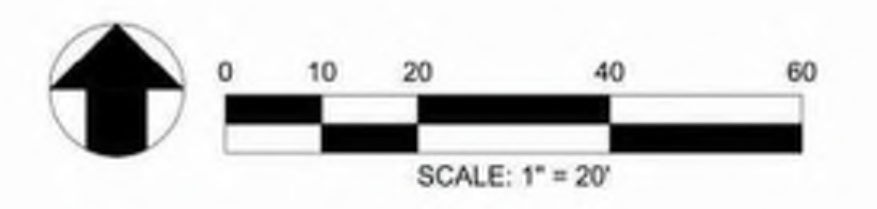


RESIDENTIAL LIGHTS AND POST EXAMPLE

6' TALL PRIVACY VINYL FENCE

6' TALL PRIVACY VINYL FENCE

North/South Pedestrian Path
 Homes situated along the North/ South Pedestrian Path front on a scenic, meandering pathway, lined with large canopy trees and decorative lighting which connects to the more commonly used pedestrian corridors. Residents on their way to the clustered mailboxes can say hello to neighbors relaxing on their porches, and enjoy amenities such as park bench seating and waste and recycling receptacles on their way back.



DESIGNED BY	JB
DRAWN BY	JB
CHECKED BY	ME
SCALE	AS SHOWN

DAVIS

**TENTATIVE SUBDIVISION MAP NO. 5180
 BRETTON WOODS
 TYPICAL NORTH - SOUTH PEDESTRIAN PATH PRELIMINARY SITE PLAN**

5 OF 16



CECWEST.COM
 Project Planning • Civil Engineering • Landscape Architecture
 Sacramento Office: 2120 20th Street, Suite Three, Sacramento, CA 95818 (916) 455-2025
 Davis Office: 2940 Spafford Street, Suite 200, Davis, CA 95618 (530) 756-2025

NO.	DATE	REVISIONS	BY	APPROV.	SHEET
					5
					16
					DATE: 8.27.2020
					JOB NO: 1594.01.10

S:\Projects\1500\1594 West Davis Active Adult Community\AutoCAD\1594-01-14-COVELL_BLDG_LAYOUT\BRETTON WOODS\BRETTON WOODS - Layout1 9/12/2019 - 10:57AM Plotted by: jpb



ART WALK CIRCULATION, TYP.
 ART INSTALLATION NODE, TYP.

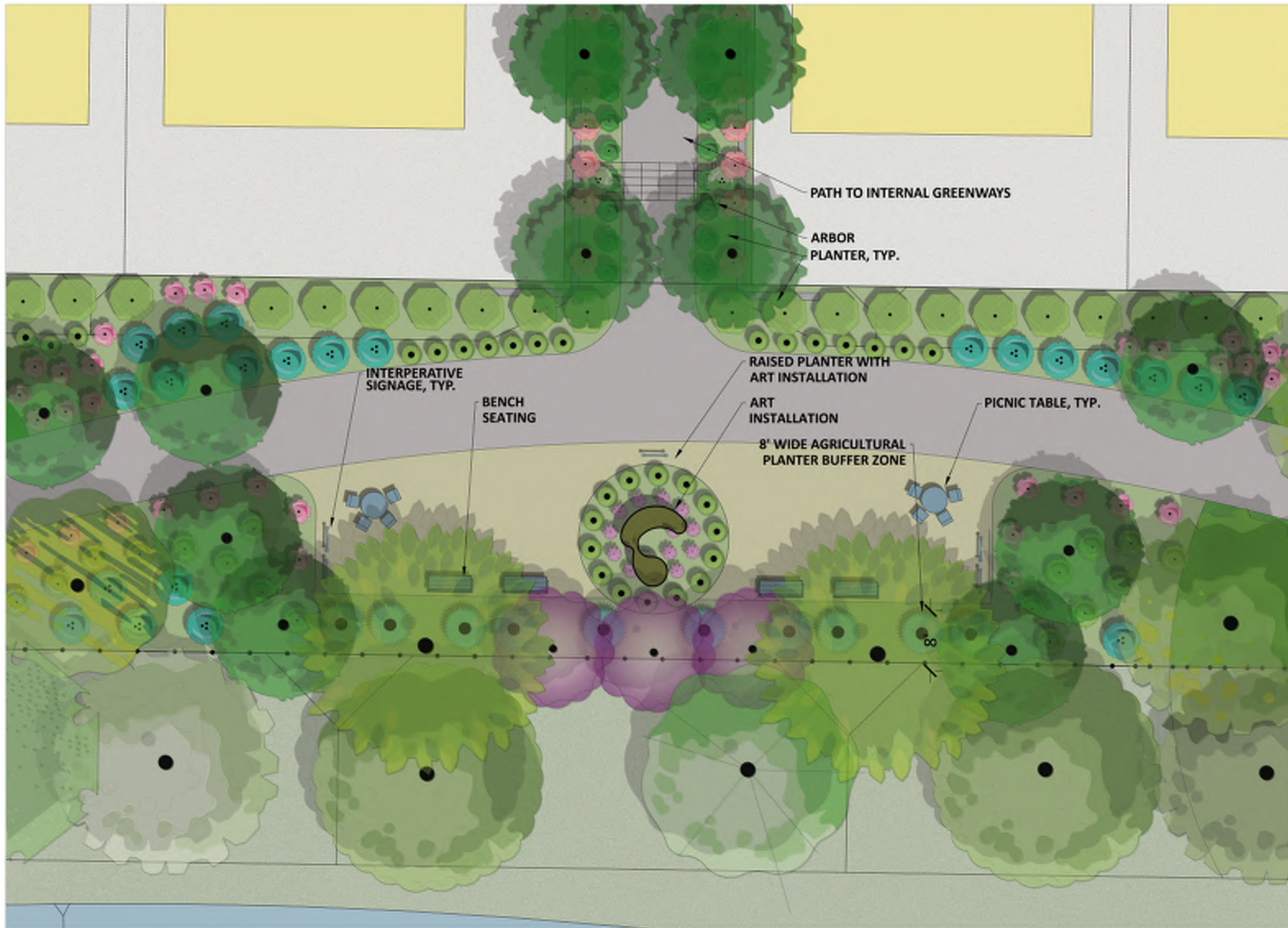
Arboretum, Art & Poetry Trail
 The art walk is comprised of 11 individual art pieces to be commissioned by local artists. As a designation and strolling garden the walk is intended to be utilized by the residents as well as the local school and UC Davis art programs. Residents, students and visitors will be able to meander along the well-marked perimeter path to the art destinations. Here they will be able to gather, view, learn, sit, ponder and enjoy the artistic elements and educational signages within the community.



DESIGNED BY	DATE
DRAWN BY	
CHECKED BY	
SCALE	
AS SHOWN	

TENTATIVE SUBDIVISION MAP NO. 5180
BRETTON WOODS
ARBORETUM, ART & POETRY TRAIL

	Project Planning • Civil Engineering • Landscape Architecture - Sacramento Office - 2101 29th Street, Suite 200 Sacramento, CA 95818 (916) 433-2224	- Davis Office - 2900 Spufford Street, Suite 200 Davis, CA 95618 (530) 756-2224	SHEET 6 OF 16 DATE: 8.27.2020 JOB NO: 190424.10
	12/28/2017 2:08 PM		



- CUSTOM BUILDER LOT, TYP.
- 6' TALL VIEW FENCE, TYP.
- NOMOW FESCUE, TYP.
- 12' WIDE PERIMETER PEDESTRIAN PATH
- POST AND CABLE FENCE
- AGRICULTURAL TRANSITION ZONE OPEN SPACE



TENTATIVE SUBDIVISION MAP NO. 5180
BRETTON WOODS
ART NODE ENLARGEMENT

7 OF 16

PREPARED BY: [Signature]
 CHECKED BY: [Signature]
 SCALE: AS SHOWN
 DAVIS



Brettton Woods
 Project Planning • Civil Engineering • Landscape Architecture
 Sacramento Office • Davis Office
 2120 25th Street, Suite 2000 Sacramento, CA 95818 (916) 488-0228
 2840 Spiller Street, Suite 200 Davis, CA 95618 (530) 762-0228

DATE	DESCRIPTION	BY	APP'D	NO.
				7
				16

JOB NO: 22042110



Quercus douglasii - Blue Oak



Quercus Agrifolia - Coast live Oak



Quercus lobata - Valley Oak



50' Perimeter Trail Enlargement
 Within the agricultural transition zone space the 12' wide asphalt path meanders amongst shade trees, shrub planters and no mow fescue areas. The 50' perimeter trail is also aligned at strategic view corridor art installations that occur to create visual interest and present destinations to gather and socialize within the community. (See - Arboretum, Art & Poetry Trail Exhibit)



TENTATIVE SUBDIVISION MAP NO. 5180

BRETTON WOODS

50' PERIMETER TRAIL ENLARGEMENT PRELIMINARY SITE PLAN

8 OF 16



DATE: 8/27/2020	PROJECT NO: 16	SHEET NO: 8
DATE: 8/27/2020	PROJECT NO: 16	SHEET NO: 8

DESIGNED BY: JH	CHECKED BY: ME
DATE: 8/27/2020	DATE: 8/27/2020
AS SHOWN	DAVIS

COTTAGES



GREENWAY HOMES

RISING STREET

SINGLE FAMILY / MULTIFAMILY

COMMUNITY GATHERING PARK

ART NODE IN RAISED PLANTER

THOMSON LOOP



TENTATIVE SUBDIVISION MAP NO. 5180
BRETTON WOODS
 ACTIVITY AND WELLNESS PRELIMINARY SITE PLAN

9 OF 16

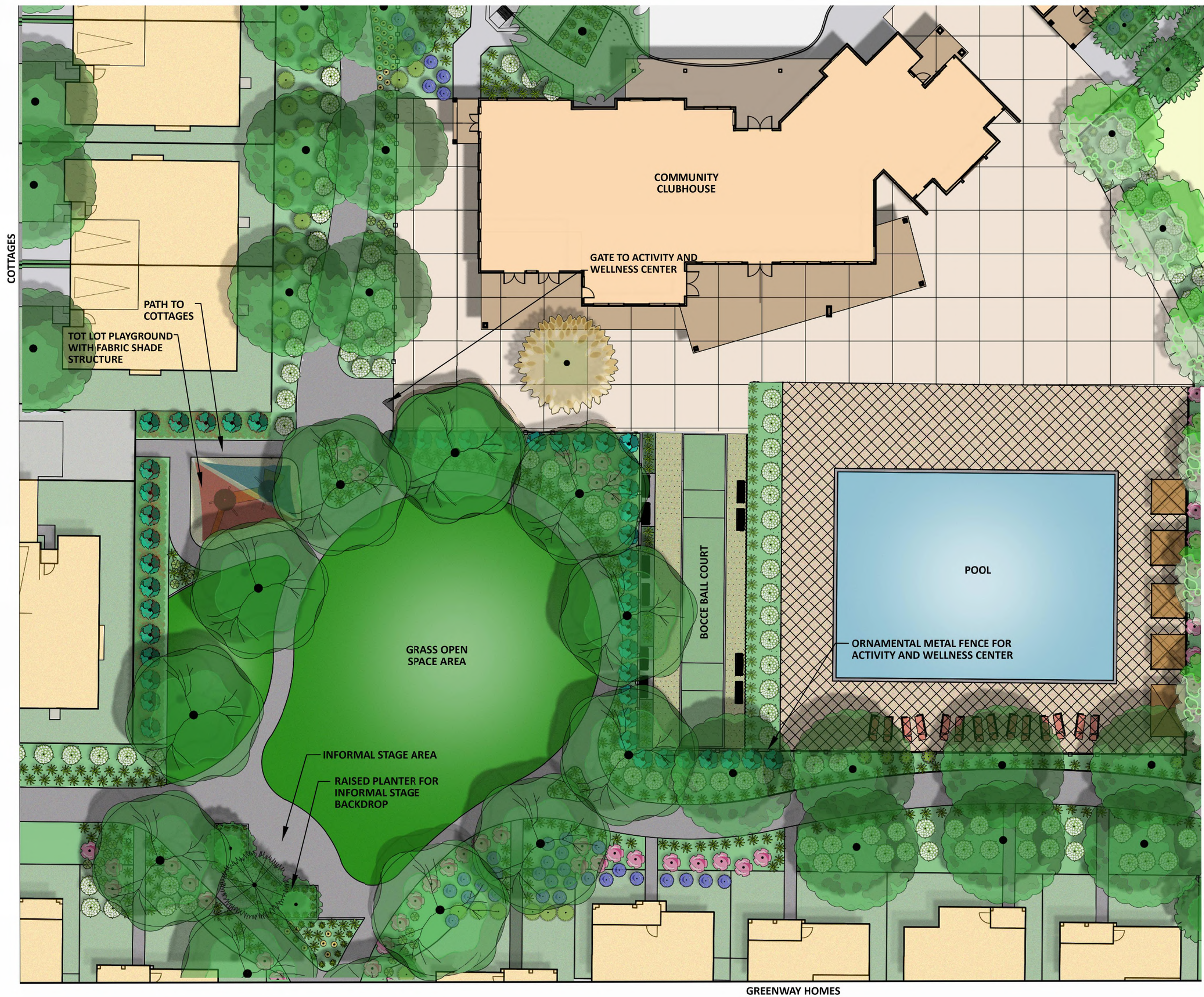


Project Planning • Civil Engineering • Landscape Architecture
 Sacramento Office • Davis Office
 2100 28th Street, Suite 300 • 2840 Spillway Street, Suite 300
 Sacramento, CA 95818 • Davis, CA 95618
 (916) 453-3228 • (916) 798-2228

NO.	DATE	DESCRIPTION	BY	APP'D	SHEET
1					9
					16
					DATE: 8.27.2023
					JOB NO: 1884.01.10

DESIGNED BY: []
 DRAWN BY: []
 CHECKED BY: []
 SCALE: AS SHOWN
 DETAILS

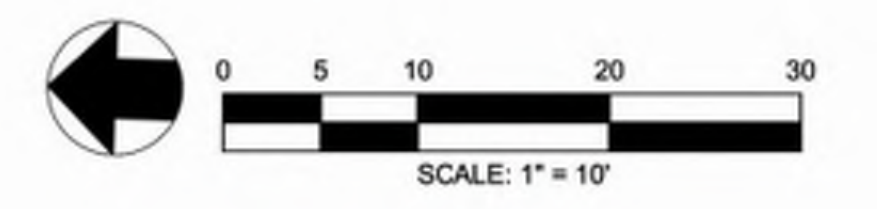
CALIFORNIA



EXAMPLE OF A TOT LOT PLAYGROUND



EXAMPLE OF A COMMUNITY EVENT WITHIN A PARK OPEN SPACE



Sycamore Grove
Located in the heart of the project adjacent to the proposed Activity and Wellness Center, offers multiple landscaped spaces for concurrent recreation and relaxation opportunities. A large lawn area has been provided to accommodate outdoor music concerts and community events, as well as semi-private weddings, retirement parties and graduation celebrations. A tot lot playground area, edged with shade trees and bench seating, will engage the littlest grandchildren.



DESIGNED BY	JB
DRAWN BY	JB
CHECKED BY	ME
SCALE	
AS SHOWN	

**TENTATIVE SUBDIVISION MAP NO. 5180
BRETTON WOODS
SYCAMORE GROVE PRELIMINARY SITE PLAN**

10 OF 16



CECWEST.COM
Project Planning • Civil Engineering • Landscape Architecture
Sacramento Office: 2120 20th Street, Suite Three, Sacramento, CA 95818 (916) 455-2026
Davis Office: 2940 Spafford Street, Suite 200, Davis, CA 95618 (530) 758-0205

NO.	DATE	REVISIONS	BY	APPROV.	SHEET
					10
					16
					DATE: 8.27.2020
					JOB NO: 1594.01.10

S:\Projects\1500\1594 West Davis Active Adm Community\AutoCAD\1594-01-14-COVELL BLVD\ENR\BTD\IMAGE1 BOARD TITLEBLOCK.dwg - Layout1 9/11/2019 - 3:53PM Plotted by: jn



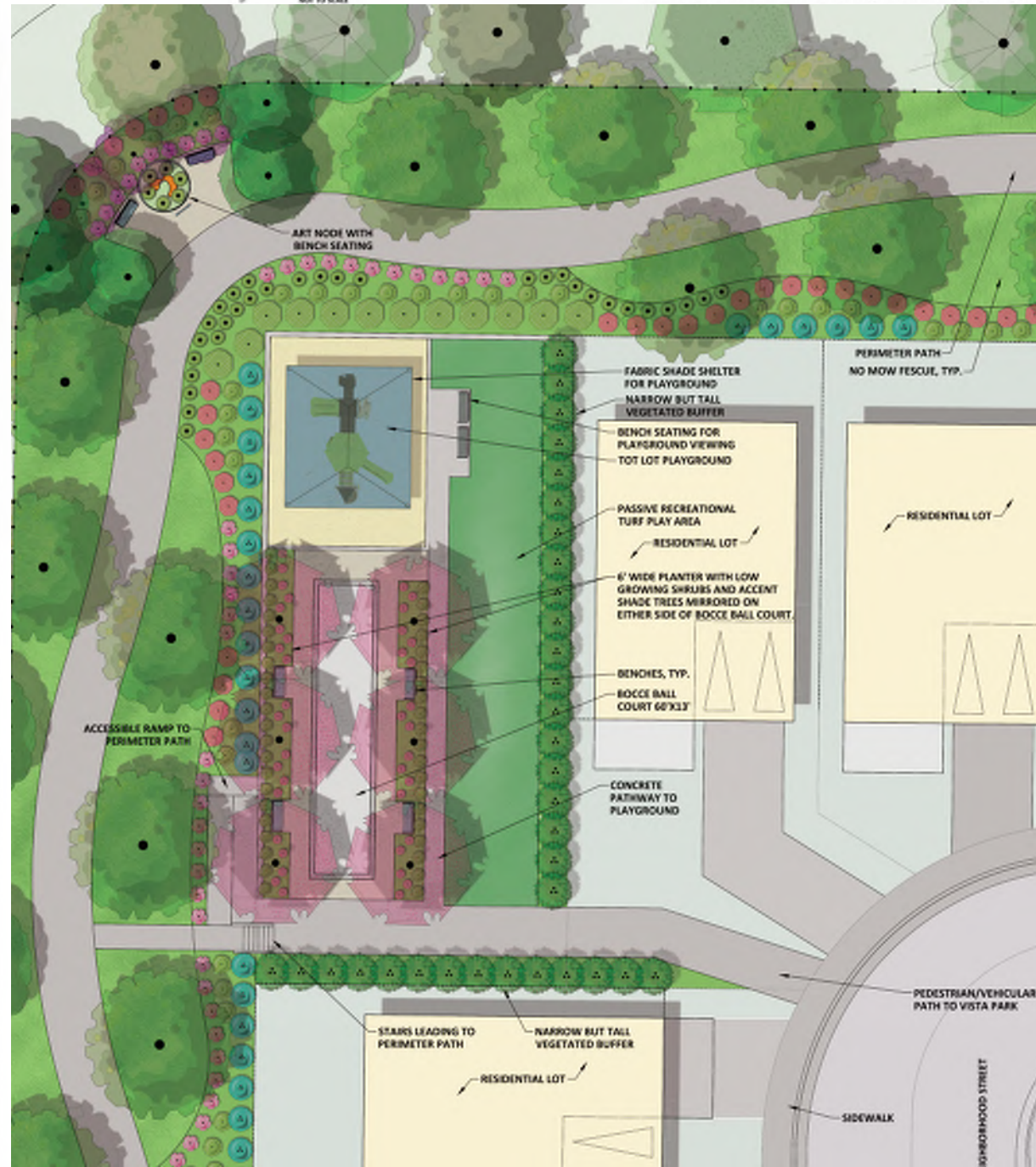
Bocce ball court with spectator / player seating



Stabilized decomposed granite paving



Tot lot playground with fabric shade shelter



Vegetated buffer at adjacent residential lots



Passive recreation turf area



TENTATIVE SUBDIVISION MAP NO. 5180
BRETTON WOODS
 VISTA PARK PRELIMINARY SITE PLAN



Project Planning • Civil Engineering • Landscape Architecture
 Sacramento Office • Davis Office
 2100 29th Street, Suite 300 • 2940 Spotted Owl Street, Suite 100
 Sacramento, CA 95818 • Davis, CA 95618
 (916) 454-3228 • (530) 756-2224

NO.	DATE	DESCRIPTION	BY	CHECKED	SCALE
1					
2					
3					
4					
5					
6					
7					
8					
9					
10					
11					
12					
13					
14					
15					
16					

DATE: 8/27/2020
 JOB NO: 1584.01.10

AS SHOWN
 CIVIL

THOMSON LOOP



SMALL AND LARGE DOG PARK LIMITS
NOT TO SCALE

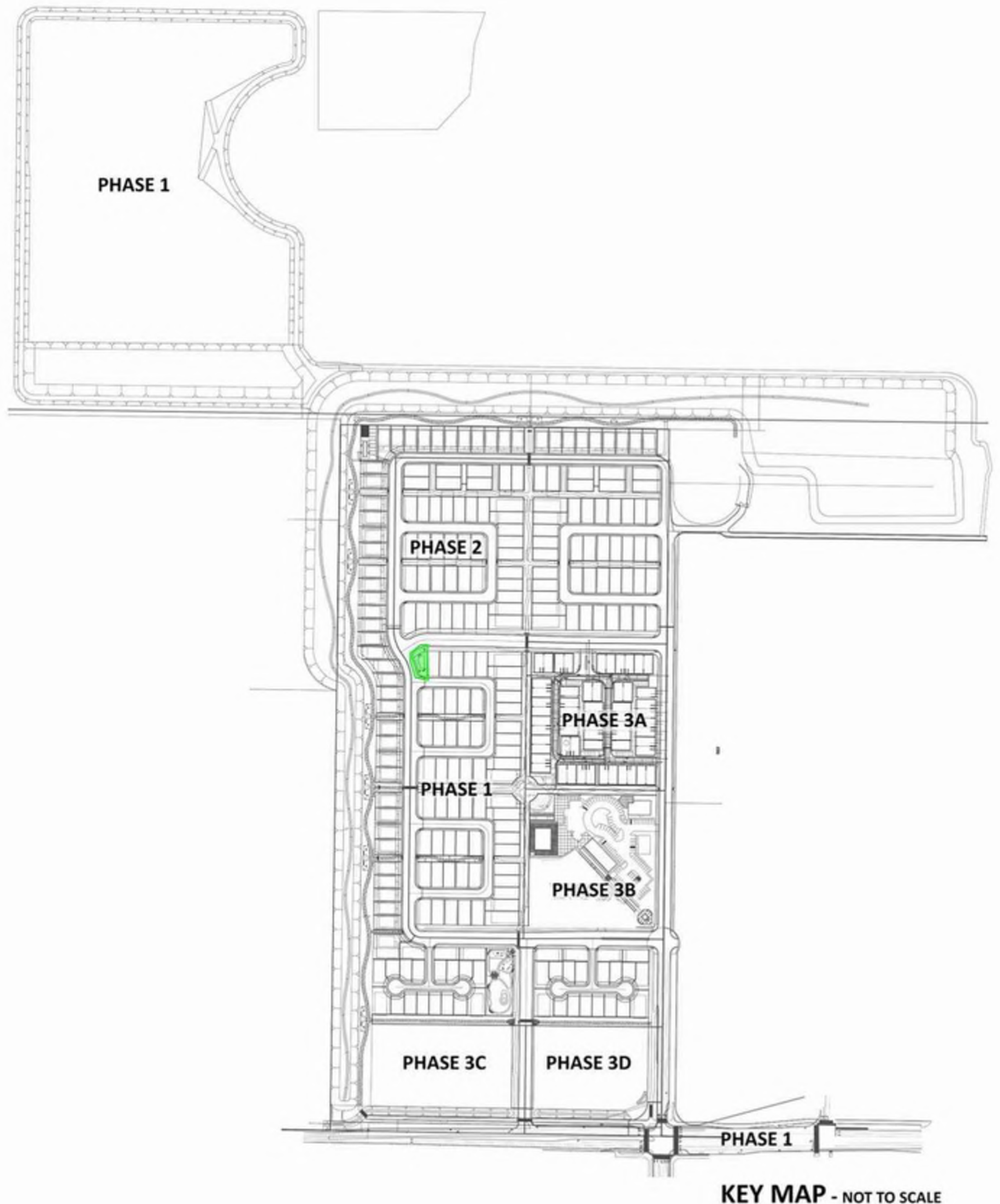


NOT TO SCALE

Dog Park
 Located centrally within the project site, this 0.65 acre area has been designated to accommodate the recreational needs of the community's canine companions. A giant embedded paw print welcomes residents at the southwest entry. A central shade pavilion with an integrated unique "twig" seating for resting with curved back rest and oriented for conversation between pet owners. Separate agility courses for large and small dogs, incorporating naturalized berming in the turf grass create opportunities for the dogs to play. Accessible paved paths loop through the large and small areas. The entire dog park is fenced with puppy panels to keep the smallest dogs safely enclosed. A central kiosk, drinking fountain, and several doggy waste stations keep dogs and their owners informed, hydrated and the park clean and tidy. Surrounded by shade trees the dog park is a place to stay cool while your best friend plays.



DATE	DESCRIPTION	BY	APP'D	SHEET
				12
				16
DATE: 8.27.2020				SCALE:
JOB NO: 1804.01.10				



KEY MAP - NOT TO SCALE



ROSE GARDEN



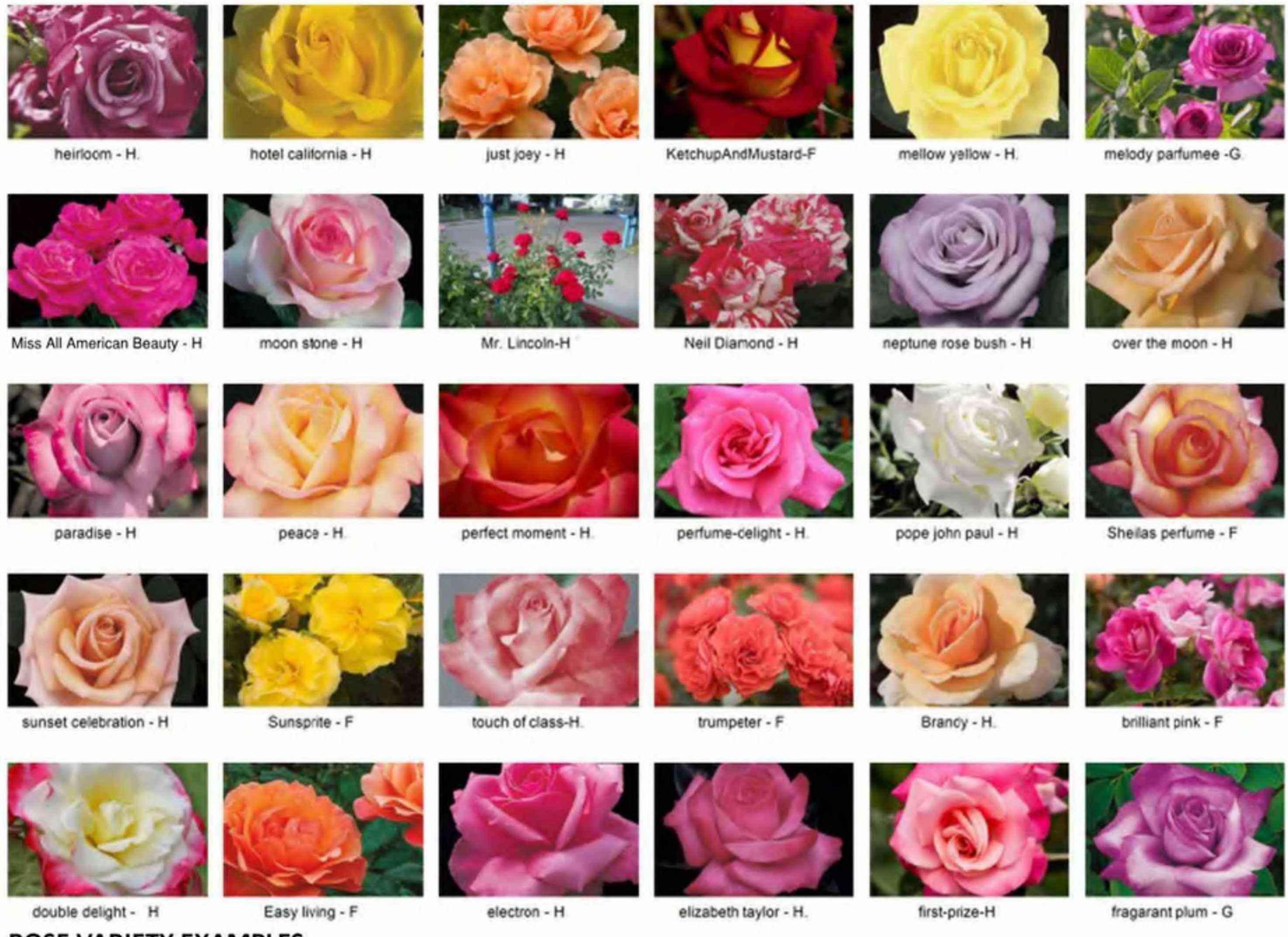
CLIMBING ROSES ON ENTRY ARBOR



METAL BENCH SEATED IN SHADED NODES FOR VIEWING THE ROSE GARDEN

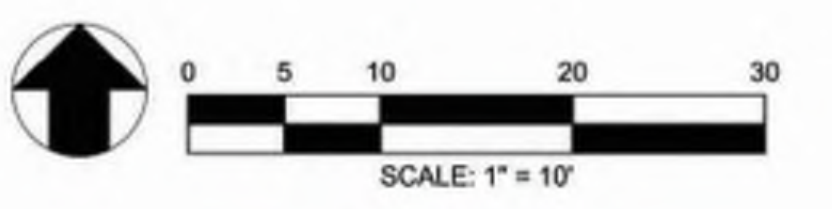


STABILIZED DECOMPOSED GRANITE PATH THROUGH THE ROSE GARDEN



ROSE VARIETY EXAMPLES

Pocket Park
 At just under 3,000 square feet, this pocket park plays off of the rose bushes at each home entry by offering a rose garden for people to enjoy as they sit at one of the two seating nodes or by walking through the site on a stabilized decomposed granite paths. The rose garden will feature a variety of rose types and colors and will have identification signage for each type of rose. In addition to the roses, ornamental trees will be placed within the planters to provide shade and central focal point withing the garden.



**TENTATIVE SUBDIVISION MAP NO. 5180
 BRETTON WOODS
 POCKET PARK PRELIMINARY SITE PLAN**

13 OF 16

DESIGNED BY	JB
DRAWN BY	JB
CHECKED BY	ME
SCALE	AS SHOWN
DAVIS	

CECWEST.COM	NO.	DATE	REVISIONS	BY	APPROV.	SHEET
						13
						OF
						16
						DATE: 8.27.2020
						JOB NO: 1594.01.10

S:\Projects\1500\1594 West Davis Active Adult Community\AutoCAD\1594-01-14-GD\ELL BLVD\LANDSCAPE\BOARD\TUBELOCK.dwg - Layout1 8/26/2019 - 9:32PM Plotted by: jn



TENTATIVE SUBDIVISION MAP NO. 5180
BRETTON WOODS

14 OF 16

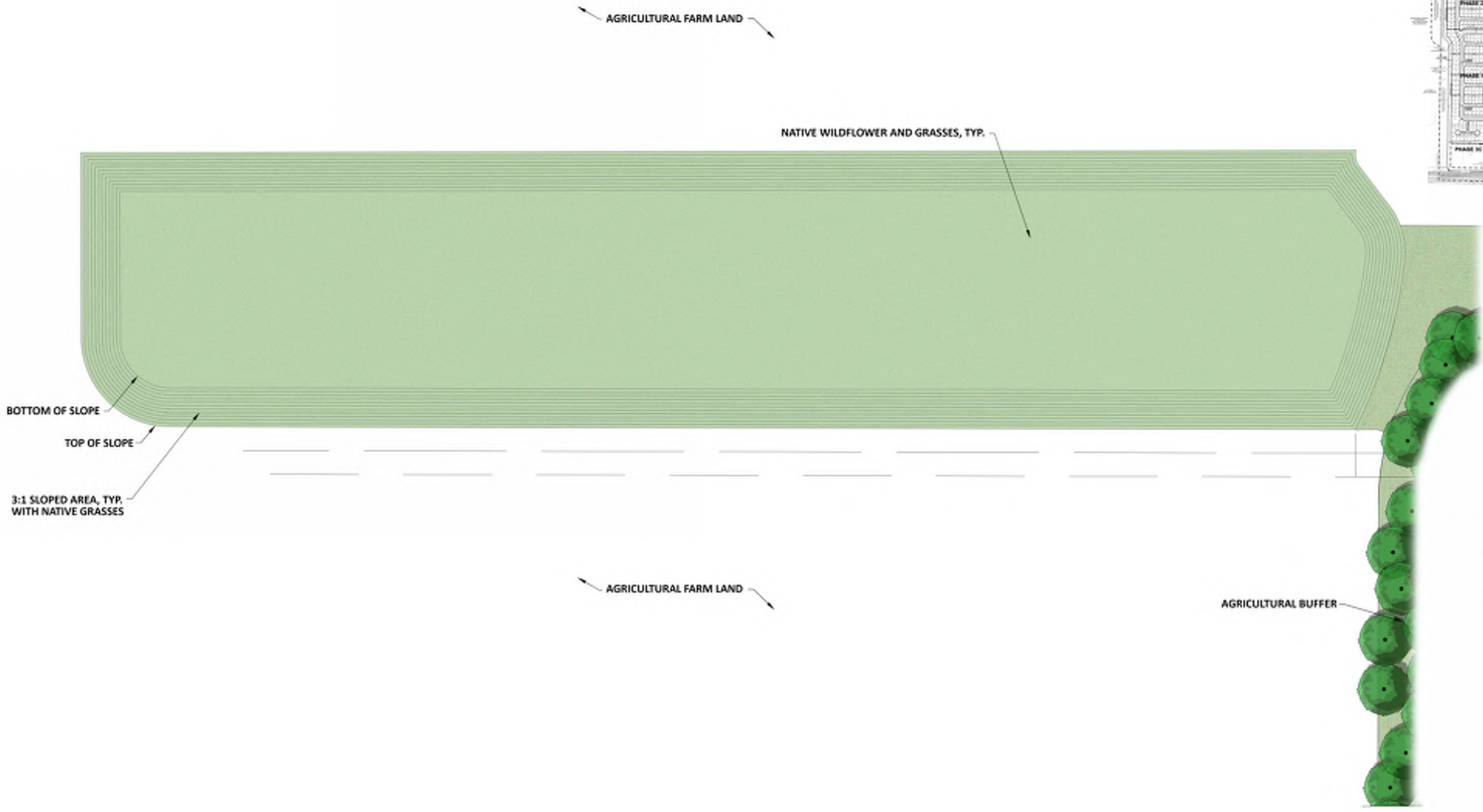


PROJECT: Planning • Civil Engineering • Landscape Architecture
 SACRAMENTO OFFICE: 2120 25th Street, Suite 300, Sacramento, CA 95818, (916) 486-2228
 DAVIS OFFICE: 2840 Spiller Street, Suite 200, Davis, CA 95618, (530) 756-2128

DATE	DESCRIPTION	BY	APP'D
8.27.2020			

REVISIONS:
 AS SHOWN
 DAVIS

14
 16
 DATE: 8.27.2020
 JOB NO: 19060110



DESIGNED BY	35C_02
DRAWN BY	35C_02
CHECKED BY	ME
SCALE	AS SHOWN
DWGS	

TENTATIVE SUBDIVISION MAP NO. 5180
BRETTON WOODS
WILDLIFE HABITAT RIPARIAN CORRIDOR

	PROJECT: Planning + Civil Engineering + Landscape Architecture	DATE: 8.27.2020	
	+ Sacramento Office 2120 Oak Street, Suite 200 Sacramento, CA 95818 (916) 438-2222	+ Davis Office 2840 Quail Street, Suite 200 Davis, CA 95618 (530) 754-2222	SHEET NO. 15 OF 16 DATE: 8.27.2020 JOB NO.: 896-01-16
	PROJECT: BRETTON WOODS SHEET: 15 OF 16 DATE: 8.27.2020	SCALE: 1" = 30' 	
	0 10 20 30 40 50 SCALE: 1" = 30'		

BRETTON WOODS PRELIMINARY PLANTING PALETTE

TREES	Botanical	Common	Cont	Water Use	HxW	CA Native	UCD Arboretum All Star	Pollinator	City Approved Trees
	ACER BUERGERIANUM	TRIDENT MAPLE	15 GAL	M	25'X25'			X	X
	ACER TRUNCATUM X PLATANOIDES 'WARRENRED'	PACIFIC SUNSET MAPLE	15 GAL	M	30'X30'				X
	ARBUTUS X 'MARINA'	ARBUTUS STANDARD	15 GAL	L	30'X30'		X	X	X
	CEDRUS DEODARA	DEODAR CEDAR	15 GAL	L	50'X25'				X
	CERCIS CANADENSIS	EASTERN REDBUD	15 GAL	M	25'X25'			X	
	CERCIS OCCIDENTALIS	WESTERN REDBUD MULTI-TRUNK	15 GAL	L	10'X10'	X	X	X	
	CHILOPSIS LINEARIS SSP. BUBBA	BUBBA DESERT WILLOW	15 GAL	L	20'X15'	X		X	
	FRAXINUS VELUTINA 'RIO GRANDE'	VELVET ASH	15 GAL	M	35'X30'	X		X	
	GYMNOCLADUS DIOICIS 'ESPRESSO-JFS'	ESPRESSO KENTUCKY COFFEE TREE	15 GAL	M	50'X35'				X
	KOELREUTERIA BIPINNATA	CHINESE FLAME TREE	15 GAL	L	30'X30'			X	X
	LAGERSTROEMIA X 'NATCHEZ'	CRAPE MYRTLE	15 GAL	L	20'X20'		X	X	X
	MACLURA POMIFERA 'WHITE SHIELD'	WHITE SHIELD OSAGE-ORANGE	15 GAL	M	35'X35'				
	PISTACIA CHINENSIS 'KEITH DAVEY'	KEITH DAVEY CHINESE PISTACHE	15 GAL	M	40'X30'				X
	PODOCARPUS GRACILIOR 'COLUMN'	FERN PINE	15 GAL	L	12'X8'				
	QUERCUS BUCKLEYI	TEXAS RED OAK	15 GAL	L	40'X40'				X
	QUERCUS CANBYI	CANBY OAK	15 GAL	M	50'X40'				
	QUERCUS ROBUR 'CRIMSCHMIDT'	CRIMSON SPIRE COLUMNAR OAK	15 GAL	M	35'X12'				
	ULMUS 'FRONTIER'	FRONTIER ELM	15 GAL	M	40'X30'				X
	ULMUS 'MORTON GLOSSY'	TRIUMPH ELM	15 GAL	M	50'X40'				
	ZELKOVA SERRATA 'GREEN VASE'	GREEN VASE SAWLEAF ZELKOVA	15 GAL	M	60'X40'				X
OAK FOREST	Botanical	Common	Cont	Water Use	HxW	CA Native	UCD Arboretum All Star	Pollinator	City Approved Trees
	QUERCUS AGRIFOLIA	COAST LIVE OAK	15 GAL	L	40'X60'	X			X
	QUERCUS DOUGLASSII	BLUE OAK	15 GAL	L	60'X30'	X			X
	QUERCUS LOBATA	VALLEY OAK	15 GAL	L	50'X50'	X	X	X	X
FRUIT TREES FOR FRONT YARDS	Botanical	Common	Cont	Water Use	HxW	CA Native	UCD Arboretum All Star	Pollinator	
	CITRUS RETICULATA 'SATSUMA'	SATSUMA TANGERINE	15 GAL	M	20'X15'			X	
	CITRUS X AURANTIIFOLIA 'BEARSS SEEDLESS'	BEARSS SEEDLESS LIME	15 GAL	M	15'X15'			X	
	CITRUS X LIMON 'EUREKA'	EUREKA LEMON	15 GAL	M	15'X15'			X	
	CITRUS X PARADISI 'OROBLANCO'	OROBLANCO GRAPEFRUIT	15 GAL	M	20'X20'			X	
	CITRUS X SINENSIS 'VALENCIA'	SWEET ORANGE	15 GAL	M	20'X20'			X	
	PERSEA AMERICANA 'WURTZ'	WURTZ DWARF AVACADO	15 GAL	M	10'X10'			X	
	PRUNUS ARMENIACA 'BLENHEIM'	BLENHEIM APRICOT	15 GAL	M	15'X15'			X	
	PRUNUS AVIUM 'VANDALAY' SEMI-DWARF	SEMI-DWARF VANDALAY CHERRY	15 GAL	M	12'X12'			X	
	PRUNUS PERSICA NUCIPERSICA 'FANTASIA'	FANTASIA NECTARINE	15 GAL	M	12'X10'			X	
	PRUNUS PERSICA 'O HENRY'	O HENRY PEACH	15 GAL	M	15'X15'			X	
	PRUNUS SALICINA 'SANTA ROSA'	SANTA ROSA PLUM	15 GAL	M	12'X10'			X	
	PUNICA GRANATUM 'PARFIANKA'	PARFIANKA POMEGRANATE	15 GAL	M	10'X10'			X	
	PYRUS COMMUNIS 'BARTLETT'	BARTLETT PEAR	15 GAL	M	20'X10'			X	
GROUNDCOVERS	Botanical	Common	Cont	Water Use	HxW	CA Native	UCD Arboretum All Star	Pollinator	
	ACHILLEA MILLEFOLIUM 'ISLAND PINK'	ISLAND PINK YARROW	1 GAL	L	1'X5'	X	X	X	
	ARCTOSTAPHYLOS X 'EMERALD CARPET'	EMERALD CARPET MANZANITA	1 GAL	L	1'X5'	X		X	
	BACCHARIS PILULARIS	DWARF COYOTE BRUSH	5 GAL	L	2'X6'	X		X	
	CERATOSTIGMA PLUMBAGINOIDES	DWARF PLUMBAGO	1 GAL	L	1'X3'		X	X	
	CONVOLVULUS MAURITANICUS	MORNING GLORY	1 GAL	L	1'X3'	X		X	
	DELOSPERMA COOPERI	COOPER'S ICE PLANT	1 GAL	L	1'X2'		X	X	
	LONICERA HISPIDULA	CALIFORNIA HONEYSUCKLE	1 GAL	L	1'X5'	X		X	
	RIBES VIBURNIFOLIUM	EVERGREEN CURRANT	1 GAL	L	2'X6'	X	X	X	
	SALVIA X 'BEE'S BLISS'	SAGE	1 GAL	L	1.5'X6'	X		X	
	SALVIA SPATHACEA	HUMMINGBIRD SAGE	1 GAL	L	2'X6'	X	X	X	
	TEUCRIUM CHAMAEDRY'S 'NANUM'	DWARF GERMANDER	1 GAL	L	1'X3'		X	X	
ORNAMENTAL GRASSES	Botanical	Common	Cont	Water Use	HxW	CA Native	UCD Arboretum All Star	Pollinator	
	MUHLBERGIA CAPILLARIS	PINK MUHLY	1 GAL	L	3'X4'	X		X	
	MUHLBERGIA RIGENS	DEERGRASS	1 GAL	L	4'X4'	X		X	
SHRUBS - LARGE	Botanical	Common	Cont	Water Use	HxW	CA Native	UCD Arboretum All Star	Pollinator	
	ACACIA BOORMANII	SNOWY RIVER WATTLE	5 GAL	L	10'X10'		X	X	
	BACCHARIS SALICIFOLIA	MULE FAT	5 GAL	L	8'X6'	X		X	
	CALLISTEMON RUGULOSUS 'VIOLEACEUS'	PURPLE BOTTLEBRUSH	5 GAL	L	6'X6'		X	X	
	CARPENTERIA CALIFORNICA 'ELIZABETH'	BUSH ANEMONE	5 GAL	L	5'X3'	X		X	
	CEANOTHUS 'RAY HARTMAN'	RAY HARTMAN CALIFORNIA LILAC	5 GAL	L	10'X10'	X	X	X	
	FRAUGALA CALIFORNICA	COFFEEBERRY	5 GAL	L	8'X8'	X		X	
	HETEROMELES ARBUTIFOLIA	TOYON	5 GAL	L	6'X6'		X	X	
	LATHYRUS JEPSONII VAR. CALIFORNICUS	CALIFORNIA PEA	5 GAL	L	7'X7'	X		X	
	OSMANTHUS X FORTUNEI	HYBRID TEA OLIVE	5 GAL	L	10'X8'		X	X	
	PHILADELPHUS 'BELLE ETOILE'	PURPLE SPOT MOCK ORANGE	5 GAL	L	6'X8'		X	X	
	RIBES MALVACEUM	CHAPARRAL CURRANT	5 GAL	L	5'X5'	X	X	X	
	ROSA CALIFORNICA	CALIFORNIA WILDROSE	5 GAL	L	8'X8'	X		X	
	RUBUS URSINUS	PACIFIC BLACKBERRY	5 GAL	L	6'X6'	X		X	
	SYRINGA LACINIATA	CUTLEAF LILAC	5 GAL	L	6'X6'	X	X	X	

16A OF 16



DESIGNED BY: <u> </u>	TENTATIVE SUBDIVISION MAP NO. 5180 BRETTON WOODS PROPOSED PLANT PALETTE		PROJECT: 16A	DATE: 8.27.2020
DRAWN BY: <u> </u>			SCALE: AS SHOWN	JOB NO: 1884.01.10
CHECKED BY: <u> </u>				
DATE: <u> </u>				

SHRUBS - MEDIUM	Botanical	Common	Cont	Water Use	HxW	CA Native	UCD Arboretum	All Star	Pollinator
	ARCTOSTAPHYLOS DENSIFLORA 'HOWARD MCMINN'	VINE HILL MANZANITA	5 GAL	L	5'X5'	X	X		X
	ASCLEPIAS FASCICULARIS	NARROW-LEAVED MILKWEED	1 GAL	L	3'X3'	X			X
	CAREX PRAEGRACILIS	CLUSTERED FIELD SEDGE	1 GAL	L	3'X3'	X			X
	CEANOTHUS 'CONCHA'	CONCHA CEANOTHUS	5 GAL	L	4'X4'	X	X		X
	CEANOTHUS X PALLIUS 'MARIE SIMON'	MARIE SIMON CEANOTHUS	5 GAL	L	5'X5'		X		X
	DASYLIRON WHEELERI	DESERT SPOON	1 GAL	L	4'X4'		X		
	DIETES VEGETA	AFRICAN IRIS	1 GAL	L	3'X3'				X
	EPILOBIUM CANUM SSP. CANUM	CALIFORNIA FUCHSIA	1 GAL	L	3'X3'	X	X		X
	ERIGONUM FASCICULATUM	CALIFORNIA BUCKWHEAT	1 GAL	L	4'X3'	X			X
	ERIGONUM GIGANTEUM	SAINT CATHERINE'S LACE	1 GAL	L	4'X4'	X	X		X
	GALVEZIA SPECIOSA 'FIRECRACKER'	BUSH SNAPDRAGON	1 GAL	L	3'X4'	X			X
	ISOMERIS ARBOREA	BLADDERPOD	5 GAL	L	4'X4'	X	X		X
	JUNCUS EFFUSUS	SOFT RUSH	1 GAL	L	4'X3'	X			X
	LUPINUS ALBIFRONS	SILVER LUPINE	1 GAL	L	4'X5'	X			X
	LEUCOPHYLLUM LANGMANIAE 'LYNN'S LEGACY'	LYNN'S LEGACY LEUCOPHYLLUM	5 GAL	L	4'X4'		X		X
	LEUCOPHYLLUM FRUTESCENS	TEXAS RANGER	5 GAL	L	5'X5'		X		X
	MAHONIA AQUIFOLIUM 'COMPACTA'	COMPACT OREGON GRAPE	5 GAL	L	3'X3'	X	X		X
	MIMULUS AURANTIACUS	STICKY MONKEY FLOWER	1 GAL	L	4'X4'	X			X
	MYRTUS COMMUNIS 'COMPACTA'	DWARF MYRTLE	5 GAL	L	4'X4'				X
	PHLOMIS PURPERA	PINK PHLOMIS	1 GAL	L	4'X4'		X		X
	RHAMNUS CALIFORNICA 'EVE CASE'	EVE CASE COFFEBERRY	5 GAL	L	4'X4'	X			X
	RIBES MALVACEUM	CHAPARRAL CURRANT	1 GAL	L	5'X5'	X	X		X
	ROSA 'PINK GRUSS AN AACHEN'	GRUSS AN AACHEN FLORIBUNDA ROSE	5 GAL	L	4'X4'		X		X
	ROSA X ODORATA 'MUTABILLS'	BUTTERFLY ROSE	5 GAL	L	5'X5'		X		X
	ROSMARINUS OFFICINALIS 'MOZART'	ED CARMAN'S ROSEMARY	1 GAL	L	3'X3'		X		X
	SAGITTARIA SANFORDII	SANFORD'S ARROWHEAD	1 GAL	L	3'X3'	X			X
	SALVIA APIANA	CALIFORNIA WHITE SAGE	5 GAL	L	4'X4'	X	X		X
	SALVIA CELESTIAL BLUE	PURPLE SAGE	5 GAL	L	4'X4'	X			X
	SALVIA CLEVELANDII 'WINNIFRED GILMAN'	WINNIFRED GILMAN CLEVELAND SAGE	5 GAL	L	4'X4'	X	X		X
	SOLIDAGO CALIFORNICA 'CASCADE CREEK'	CASCADE CREEK CALIFORNIA GOLDENROD	1 GAL	L	3'X3'	X	X		X
	SYMPHORICARPUS ALBUS	COMMON SNOWBERRY	5 GAL	L	4'X6'	X			X
	TEUCRIUM FRUTICANS	BUSH GERMANDER	5 GAL	L	4'X4'	X	X		X
SHRUBS - SMALL	Botanical	Common	Cont	Water Use	HxW	CA Native	UCD Arboretum	All Star	Pollinator
	CEANOTHUS MARITIMUS 'VALLEY VIOLET'	MARITIME CEANOTHUS	1 GAL	L	2'X4'	X	X		X
	DICHELOSTEMMA CAPITATUM	BLUE DICKS	1 GAL	L	2'X2'	X			X
	ESCHSCHOLZIA CALIFORNICA	CALIFORNIA POPPY	1 GAL	L	2'X2'	X			X
	HESPERALOE PARVIFLORA 'BRAKELIGHTS' TM	BRAKELIGHTS RED YUCCA	1 GAL	L	2'X2'		X		X
	LASTHENIA GLABRATA	YELLOW RAYED LASTHENIA	1 GAL	L	2'X2'	X			X
	LAVANDULA X GINGINSII 'GOODWIN CREEK GREY'	GOODWIN CREEK LAVENDER	1 GAL	L	2'X2'		X		X
	LAVANDULA STOCHAS 'OTTO QUAST'	SPANISH LAVENDER	1 GAL	L	2'X3'		X		X
	LUPINUS FORMOSUS	SUMMER LUPINE	1 GAL	L	2'X2'	X			X
	PENSTEMON HETEROPHYLLUS 'MARGARITA BOP'	BEARD TONGUE	1 GAL	L	2'X3'	X	X		X
	SALVIA 'DARA'S CHOICE'	DARA'S CHOICE CREEPING SAGE	1 GAL	L	2'X3'	X			X
	SALVIA X JAMENSIS	AUTUMN SAGE	1 GAL	L	2'X3'		X		X
	SALVIA NUMZII 'EMERALD CASCADE'	EMERALD CASCADE SAGE	1 GAL	L	2'X3'	X			X
	SISYRINCHIUM BELLUM	BLUE EYED GRASS	1 GAL	L	1'X3'	X			X
	VERBENA CANADENSIS 'HOMESTEAD PURPLE'	HOMESTEAD PURPLE VERBENA	1 GAL	L	12"X18"	X			X
	VIGUIERA PARISHII	DESERT GOLDENEYE	1 GAL	L	2'X2'	X	X		X
VINES	Botanical	Common	Cont	Water Use	HxW	CA Native	UCD Arboretum	All Star	Pollinator
	HARDENBERGIA VIOLACEA	LILAC VINE	1 GAL	L	12'X5'		X		X
	JASMINUM NUDIFLORUM	WINTER JASMINE	1 GAL	L	12'X5'		X		X
	LONICERA HISPIDULA VAR. VACILLANS	CALIFORNIA HONEYSUCKLE	1 GAL	L	5'X10'	X			X
	ROSA CLIMBING ROSE 'GOLDEN SHOWERS'	'GOLDEN SHOWERS'	5 GAL	M	6'X8'				X
ROSES	Botanical	Common	Cont	Water Use	HxW	CA Native	UCD Arboretum	All Star	Pollinator
	ROSA FLORIBUNDA 'JULIA CHILDS'	JULIA CHILDS ROSE	5 GAL	M	5'X3'				X
	ROSA HYBRID TEA ROSE 'MISTER LINCOLN' TM	MISTER LINCOLN TEA ROSE	5 GAL	M	5'X3'				X
	ROSA HYBRID TEA ROSE 'STAINLESS STEEL'	STAINLESS STEEL TEA ROSE	5 GAL	M	5'X4'				X
	ROSA STANDARD X 'EASY DOES IT'	EASY DOES IT ROSE	2 GAL	M	4'X3'				X
	ROSA 'KRICARLO'	TOUCH OF CLASS	2 GAL	M	4'X4'				X
GROUND PLANE	Botanical	Common	Cont	Water Use		CA Native	UCD Arboretum	All Star	Pollinator
	NON-IRRIGATED HYDROSEED MIX, PACIFIC COAST SEED	HERITAGE MIX 40 LBS. / ACRE	HYDROSEED	L		X			
	NO MOW FESCUE	SOD	SOD	M					
	TURF SOD	DROUGHT TOLERANT FESCUE BLEND	SOD	H					
TOTALS (*)						64%	50%		
						CA NATIVE	UCD ALL STARS		

(*) Note: Percentage of California Native and UC Davis Arboretum All-Stars shown are based on the total of ground covers, grasses, shrubs, vines, roses and ground plane plantings
Tree species are not included in the quantity.

16B OF 16



TENTATIVE SUBDIVISION MAP NO. 5180
BRETTON WOODS
PROPOSED PLANT PALETTE



Professional Planning • Civil Engineering • Landscape Architecture
 • Sacramento Office • Davis Office
 2100 20th Street, Suite 7000 Sacramento, CA 95833 (916) 682-2228
 2900 Safford Street, Suite 200 Davis, CA 95618 (530) 756-2258

DATE	DESCRIPTION	BY	CHECKED
8.27.2020			

DATE: 8.27.2020
JOB NO: 1994.01.30

DESIGNED BY: [initials]
 DRAWN BY: [initials]
 CHECKED BY: [initials]
 SCALE: AS SHOWN
 DAVIS