

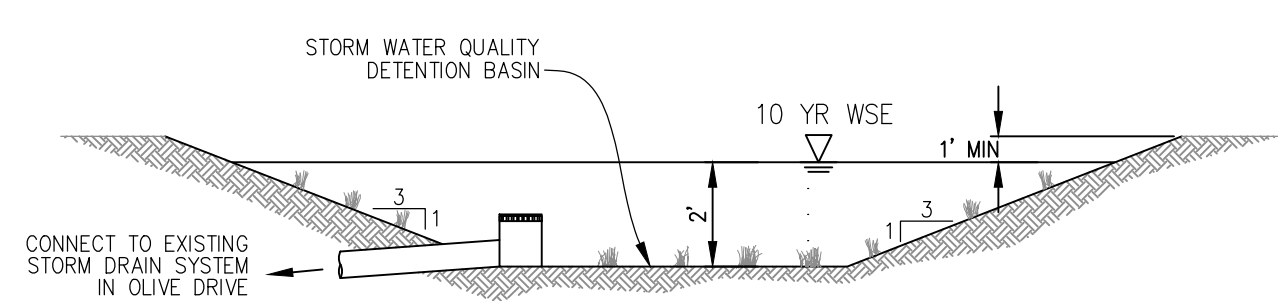
STORMWATER QUALITY DATA	
TOTAL PROJECT AREA:	5.92 ACRES
EXISTING TOTAL IMPERVIOUS AREA:	1.24 ACRES
PROPOSED TOTAL IMPERVIOUS AREA:	3.37 ACRES

**KEYNOTES:**

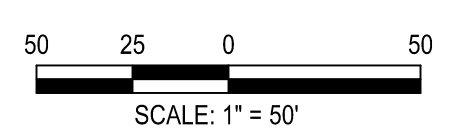
- ① PERVIOUS PAVEMENT WITH PERFORATED PIPE UNDERDRAIN FOR STORMWATER QUALITY MANAGEMENT.
- ② VEGETATED SWALE FOR STORMWATER QUALITY MANAGEMENT.
- ③ STORMWATER PLANTER FOR STORMWATER QUALITY MANAGEMENT.
- ④ DETENTION BASIN FOR STORMWATER QUALITY AND STORMWATER QUANTITY MANAGEMENT. SEE DETAIL "A", THIS SHEET
- ⑤ "HOLLYWOOD DRIVE" PARKING STALL FOR EXISTING TREE ROOT PROTECTION.
- ⑥ CONNECT TO EXISTING STORM DRAIN INFRASTRUCTURE.

**NOTES:**

1. SEE SEPARATE STORMWATER QUALITY CALCULATIONS BASED ON SECTION 5.5 OF THE CALIFORNIA STORMWATER BMP HANDBOOK, DATED JANUARY 2003 PER SECTION E.12.E(1),(C)2 OF THE STATE GENERAL PERMIT, DATED FEBRUARY 5, 2013.
2. SEE CONCEPTUAL PLANTING PLAN FOR PLANTING WITHIN STORMWATER TREATMENT PLANTERS. INVASIVE SPECIES (AS NOTED IN THE CALIFORNIA INVASIVE SPECIES DATABASE) WILL NOT BE INCLUDED IN THE PROPOSED DESIGN.
3. IRRIGATION OVERHEAD SPRAY DEVICES WILL NOT BE INCLUDED WITHIN 2 FEET OF ANY IMPERVIOUS SURFACING NOR WILL OVER-SPRAY BE ALLOWED ONTO IMPERVIOUS SURFACES THAT FLOW UNTREATED TO THE CITY STORM DRAIN SYSTEM.



**DETAIL A  
DETENTION BASIN**  
NTS



DESIGNED BY LR

DRAWN BY LR

CHECKED BY ML

SCALE AS SHOWN

APPD.

BY

REVISIONS

NO.

DATE

CECWEST.COM

Project Planning = Civil Engineering = Landscape Architecture

Sacramento Office  
2120 20th Street, Suite Three  
Sacramento, CA 95818  
(916) 455-2026

Davis Office  
2840 Spafford Street, Suite 200  
Davis, CA 95618  
(530) 758-2026

**HIGHBRIDGE PROPERTIES**

**LINCOLN 40**

**PRELIMINARY GRADING, DRAINAGE AND**

**STORMWATER QUALITY EXHIBIT**

DAVIS CALIFORNIA

SHEET **1** OF **1**

DATE: 2/22/2017

JOB NO: 1542-04

S:\Projects\1500\1542\_Highbridge Properties, Olive Drive, Davis\AUTOCAD\1542-02-Grading and Drainage Exhibit.dwg - Layout1 2/21/2017 - 4:08PM Plotted by: Lemo